



On-line PICASSO PROJECT

**Comprehensive Catalogue Raisonné
Prof. Dr. Enrique Mallen**

1955



Les femmes d'Alger (d'après Delacroix) (Toile D). Paris. 1-January/1955. Oil on canvas. [46 x 55] [45,7 x 54,6] [45,8 x 55,2] 46 x 53,6 cm. Los Angeles County Museum of Art. (Inv M.2005.70.109). Partial, fractional and promised gift of Janice & Henri Lazarof. Formerly Paul Rosenberg & Co, NY.

OPP.55:004; PP.55:001; Z.XVI:346; AB.57*:108; JR.62*:7.9; KG.71:168; KG.85:168; LS.75:80; MJ.55*:127; RS.88:154-155p; UP.00:1003; WW.91:523p

Tête d'homme. Paris. 1-January/1955. Color crayon drawing. 30,4 x 22,8 cm. Charityfolks.com. 2005.

OPP.55:131





Les femmes d'Alger (d'après Delacroix) (Étude) I. Paris. 2-January/1955. Pen & India ink on squared paper. 21 x 27 cm. Musée Picasso, Paris. Dation 1979.

OPP.55:049; MPP:1472; PP.55:002

Les femmes d'Alger (d'après Delacroix) (Étude) II. Paris. 2-January/1955. Pen & India ink on squared paper. 21 x 27 cm. Musée Picasso, Paris. Dation 1979.

OPP.55:050; MPP:1473; PP.55:003





Les femmes d'Alger (d'après Delacroix) (Étude) III. Paris. 2-January/1955. Pen & India ink on squared paper. 21 x 27 cm. Musée Picasso, Paris. Dation 1979.

OPP.55:051; MPP:1474; PP.55:004;
JC.01a*:205; PA.21e*:282

Les femmes d'Alger (d'après Delacroix) (Étude) IV. Paris. 2-January/1955. Pen & India ink on squared paper. 21 x 27 cm. Musée Picasso, Paris. Dation 1979.

OPP.55:052; MPP:1475; PP.55:005





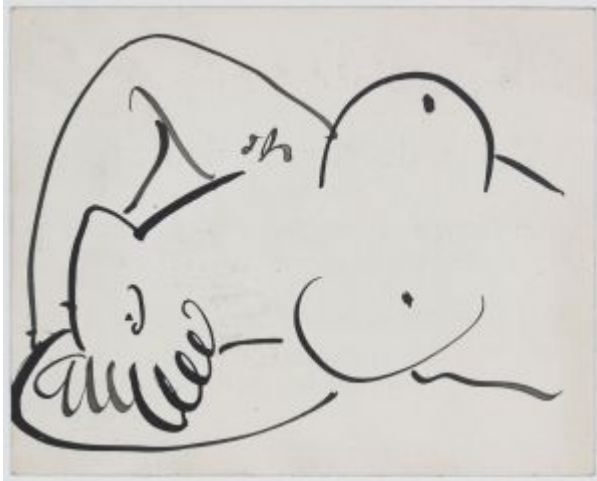
Les femmes d'Alger (d'après Delacroix) (I).
Paris. 2-January/1955. Etching in black wove
paper. 23,7 x 29,9 cm. Musée Picasso, Paris.
Dation 1979.

OPP.55:395; B.I:1357; MPP:3014; PJ.14*:59p

**Les femmes d'Alger (d'après
Delacroix) (Étude).** Paris. 2~3-
January/1955. Pen & India ink on squared
paper. 21 x 27 cm. Musée Picasso, Paris.
Dation 1979.

OPP.55:053; MPP:1470; PP.55:006;
MS.01*:n/a; PA.19d*:338





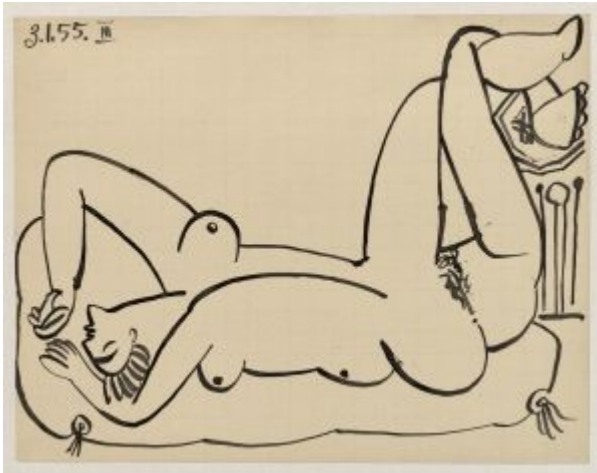
Les femmes d'Alger (d'après Delacroix) (Étude). Paris. 2~3-January/1955. Pen & India ink on squared paper. 21 x 27 cm. Musée Picasso, Paris. Dation 1979.

OPP.55:054; MPP:1471; PP.55:007

Les femmes d'Alger (d'après Delacroix) (Étude) I. Paris. 3-January/1955. Pen & India ink on squared paper. 21 x 27 cm. Musée Picasso, Paris. Dation 1979.

OPP.55:055; MPP:1476; PP.55:008





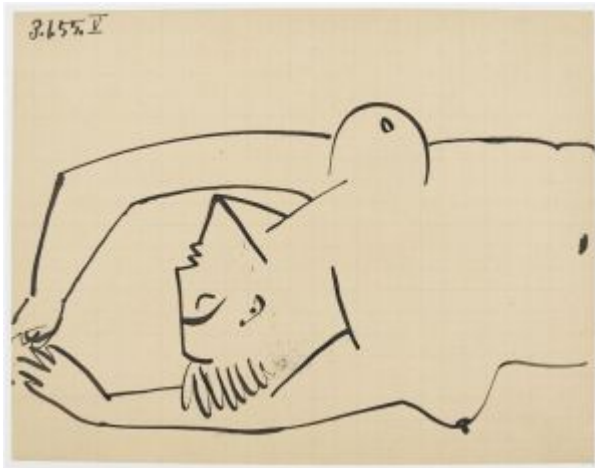
Les femmes d'Alger (d'après Delacroix) (Étude) II. Paris. 3-January/1955. Pen & India ink on squared paper. 21 x 27 cm. Musée Picasso, Paris. Dation 1979.

OPP.55:056; MPP:1477; PP.55:009;
BA.03b*:n/a; BD.16*:83; JC.01a*:206;
PA.21e*:283; SD.05*:n/a



Les femmes d'Alger (d'après Delacroix) (Étude) III. Paris. 3-January/1955. Pen & India ink on squared paper. 21 x 27 cm. Musée Picasso, Paris. Dation 1979.

OPP.55:057; MPP:1478; PP.55:010;
PP.20*:252

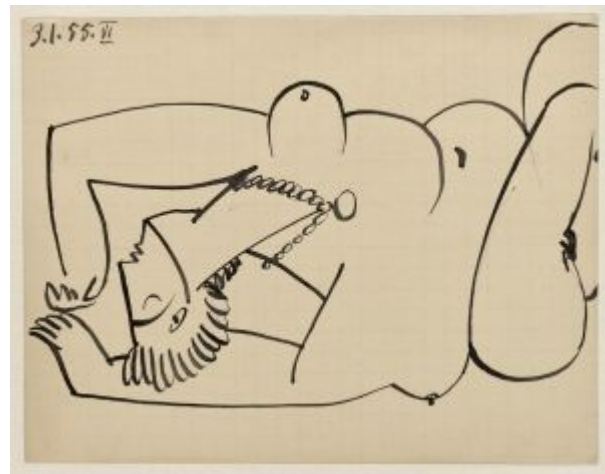


Les femmes d'Alger (d'après Delacroix) (Étude) IV. Paris. 3-January/1955. Pen & India ink on squared paper. 21 x 27 cm. Musée Picasso, Paris. Dation 1979.

OPP.55:058; MPP:1479; PP.55:011

Les femmes d'Alger (d'après Delacroix) (Étude) V. Paris. 3-January/1955. Pen & India ink on squared paper. 21 x 27 cm. Musée Picasso, Paris. Dation 1979.

OPP.55:059; MPP:1480; PP.55:012





Jacqueline VII. Paris. 3-January/1955. India ink & gouache on paper. 27 x 21 cm. Private collection.

OPP.55:392; PJ.14*:48p



Jacqueline VIII. Paris. 3-January/1955. India ink on paper. 27 x 21 cm. Catherine Hutin-Blay Collection, Paris. Formerly Jacqueline Roque Picasso Collection.

OPP.55:393; LM.17*:158; PD.19*:9; PJ.14*:48p

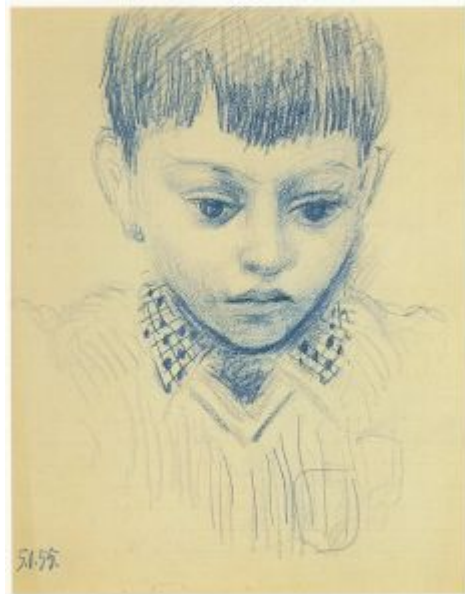


Portrait de Antonio Machado. Cannes. 3-January/1955. Pen & India ink. 64,8 x 50 cm. Private collection.

OPP.55:402

Portrait d'enfant (Claude). Paris. 5-January/1955. Blue pencil on paper. 27 x 21 cm. Marina Picasso Collection. (Inv 5360). Courtesy Galerie Jan Krugier, Geneva.

OPP.55:060; PP.55:012a; PR.83:71; WS.95a*:138





Portrait d'enfant, profil gauche (Claude). Paris. 5-January/1955. Colored crayon on paper. 27 x 20,9 cm. Sotheby's. #596, L16005, 02/05/16. Formerly Marina Picasso Collection.

OPP.55:409

Les femmes d'Alger (d'après Delacroix) (Étude) I. Paris. 7-January/1955. Pencil. 21 x 27 cm. Musée Picasso, Paris. Dation 1979.

OPP.55:061; MPP:1481; PP.55:013





Les femmes d'Alger (d'après Delacroix) (Étude) II. Paris. 7-January/1955. Pencil. 21 x 27 cm. Musée Picasso, Paris. Dation 1979.

OPP.55:062; MPP:1482; PP.55:014

Les femmes d'Alger (d'après Delacroix) (Étude) III. Paris. 7-January/1955. Pencil. 21 x 27 cm. Musée Picasso, Paris. Dation 1979.

OPP.55:063; MPP:1483; PP.55:015; JF.96:160p





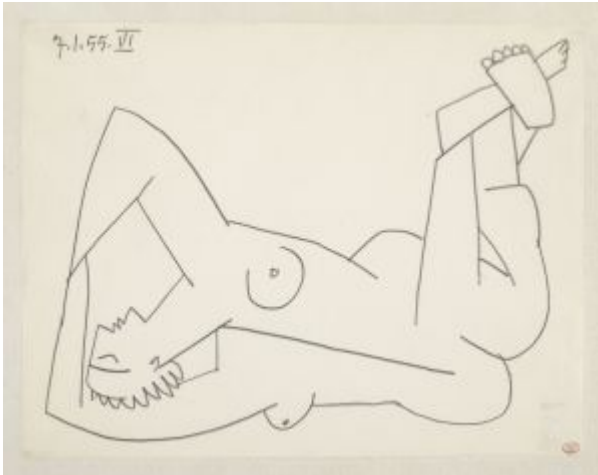
Les femmes d'Alger (d'après Delacroix) (Étude) IV. Paris. 7-January/1955. Pencil. 21 x 27 cm. Musée Picasso, Paris. Dation 1979.

OPP.55:064; MPP:1484; PP.55:016

Les femmes d'Alger (d'après Delacroix) (Étude) V. Paris. 7-January/1955. Graphite on paper. 21 x 27 cm. Musée Picasso, Paris. Dation 1979.

OPP.55:065; MPP:1485; PP.55:017;
PA.21e*:284





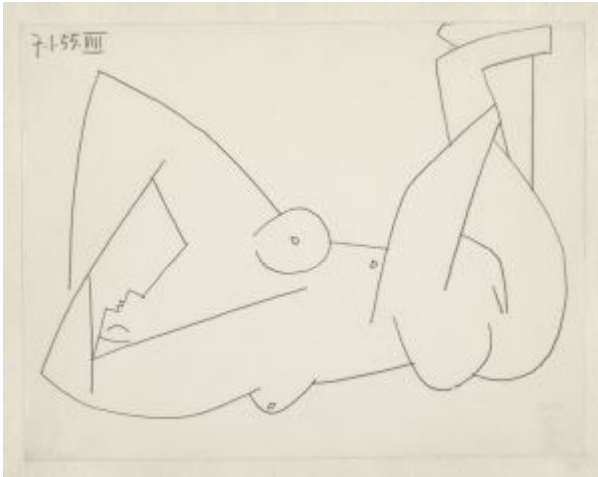
Les femmes d'Alger (d'après Delacroix) (Étude) VI. Paris. 7-January/1955. Pencil. 21 x 27 cm. Musée Picasso, Paris. Dation 1979.

OPP.55:066; MPP:1486; PP.55:018

Les femmes d'Alger (d'après Delacroix) (Étude) VII. Paris. 7-January/1955. Pencil. 21 x 27 cm. Musée Picasso, Paris. Dation 1979.

OPP.55:067; MPP:1487; PP.55:019



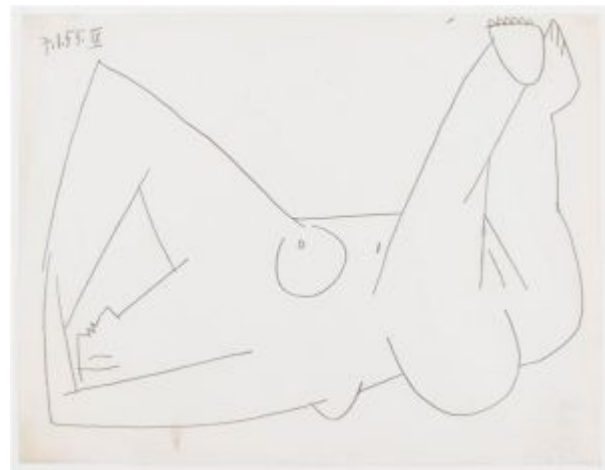


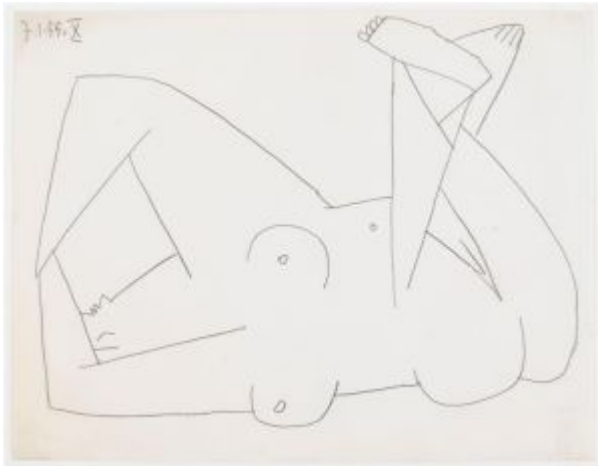
Les femmes d'Alger (d'après Delacroix) (Étude) VIII. Paris. 7-January/1955. Pencil. 21 x 27 cm. Musée Picasso, Paris. Dation 1979.

OPP.55:068; MPP:1488; PP.55:020

Les femmes d'Alger (d'après Delacroix) (Étude) IX. Paris. 7-January/1955. Pencil. 21 x 27 cm. Musée Picasso, Paris. Dation 1979.

OPP.55:069; MPP:1489; PP.55:021





Les femmes d'Alger (d'après Delacroix) (Étude) X. Paris. 7-January/1955. Graphite on paper. 21 x 27 cm. Musée Picasso, Paris. Dation 1979.

OPP.55:070; MPP:1490; PP.55:022;
PA.21e*:285; PP.20*:253

Les femmes d'Alger (d'après Delacroix) (Étude) I. Paris. 8-January/1955. Pen & India ink on the back of invitation card. 10 x 12,5 cm. Musée Picasso, Paris. Dation 1979.

OPP.55:071; MPP:1491; PP.55:023;
PA.19d*:337; PE.01a*:92; TG.88:23





Les femmes d'Alger (d'après Delacroix) (Étude) II. Paris. 8-January/1955. Pen & India ink on the back of invitation card. 10 x 12,5 cm. Musée Picasso, Paris. Dation 1979.

OPP.55:072; MPP:1492; PP.55:024

Les femmes d'Alger (d'après Delacroix) (Étude) III. Paris. 8-January/1955. Pen & India ink on the back of invitation card. 10 x 12,5 cm. Musée Picasso, Paris. Dation 1979.

OPP.55:073; MPP:1493; PP.55:025;
JF.96:160p





Les femmes d'Alger (d'après Delacroix) (Étude) IV. Paris. 8-January/1955. Pen & India ink on the back of invitation card. 10 x 12,5 cm. Musée Picasso, Paris. Dation 1979.

OPP.55:074; MPP:1494; PP.55:026

Les femmes d'Alger (d'après Delacroix) (Étude) V. Paris. 8-January/1955. Pen & India ink on the back of invitation card. 10 x 12,5 cm. Musée Picasso, Paris. Dation 1979.

OPP.55:075; MPP:1495; PP.55:027;
JF.96:160p; MS.01*:n/a





Les femmes d'Alger (d'après Delacroix) (Étude) VI. Paris. 8-January/1955. Pen & India ink on the back of invitation card. 10 x 12,5 cm. Musée Picasso, Paris. Dation 1979.

OPP.55:076; MPP:1496; PP.55:028; UP.00:998

Les femmes d'Alger (d'après Delacroix) (Étude) VII. Paris. 8-January/1955. Pen & India ink on the back of invitation card. 10 x 12,5 cm. Musée Picasso, Paris. Dation 1979.

OPP.55:077; MPP:1497; PP.55:029





Les femmes d'Alger (d'après Delacroix). Paris. 9-January/1955. Ink & watercolor on paper. 21 x 27 cm. Catherine Hutin-Blay Collection, Paris. Formerly Jacqueline Roque Picasso Collection.

OPP.55:394; LM.17*:n/a; PD.19*:22;
PJ.14*:58p

Les femmes d'Alger II (d'après Delacroix). Paris. 9-January/1955. Burin. 23,8 x 29,8 cm. Musée Picasso, Paris. Dation 1979.

OPP.55:432; B.I:1358; MPP:3015;
PP.20*:255



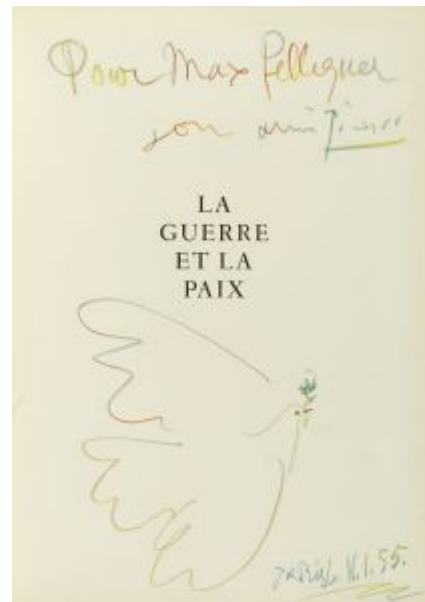


Les femmes d'Alger (d'après Delacroix) II.
Paris. 9-January/1955. Burin. 24,2 x 30,2 cm.
Musée Picasso, Paris. Don des héritiers Picasso en
1982.

OPP.55:538; MPP:1982.57

La colombe en vol (Pour Max Pellequer). Vallauris. 11-
January/1955. Color crayons on page of Claude Roy, La
Guerre et la Paix. 36,5 x 26,2 cm. Christie's. #172, 16415,
11/20/18.

OPP.55:509





Femme de profil dans un fauteuil III. Cannes. 12-January/1955 ~ 1-May/1956. Oil on canvas. 100 x 81 cm. Sotheby's. #50, NY7131, 05/13/98. Formerly André Lefèvre Collection, Paris.

OPP.55:231; PP.55:260; Z.XVI:531; GN.89*:n/a;
LO.87a*:n/a; MR.57*:37; PA.64b*:237

Claude et Paloma. Cannes. 13-January/1955. Etching. 29,2 x 23,3 cm. Private collection.

OPP.55:144; B.I:1361





Les femmes d'Alger (d'après Delacroix) (III).
Paris. 14-January/1955. Etching in black wove paper. 23,8 x 29,7 cm. Musée Picasso, Paris.
Dation 1979.

OPP.55:396; B.I:1360; MPP:3017; PJ.14*:60p

Les femmes d'Alger (d'après Delacroix) (IV). Paris. 14-January/1955.
Etching in black wove paper. 23,6 x 29,8 cm. Musée Picasso, Paris. Dation 1979.

OPP.55:397; B.I:1359; MPP:3016;
PJ.14*:60p



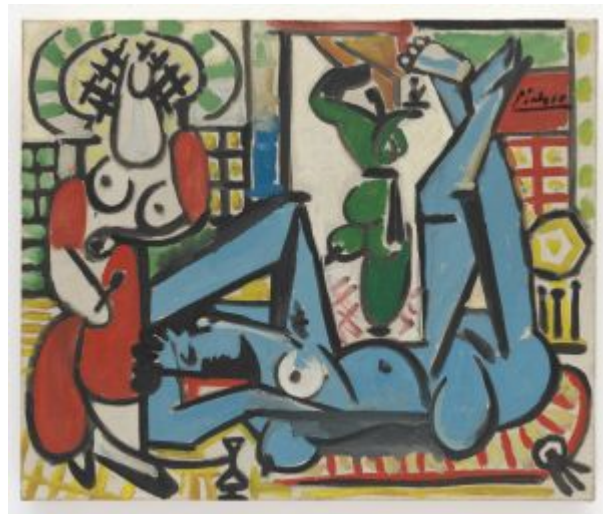


Les femmes d'Alger (d'après Delacroix) (V). Paris. 15-January/1955. Etching in black wove paper. 23,7 x 29,8 cm. Musée Picasso, Paris. Also National Gallery of Art, Washington, DC. Edward E. MacCrone Fund.

OPP.55:398; Ba:913; MPP:3026; PD.19*:21; PJ.14*:61p

Les femmes d'Alger (d'après Delacroix) (Toile E). Paris. 16-January/1955. Oil on canvas. 46,1 x 55 cm. San Francisco Museum of Modern Art. (Inv 64.4). Gift of Mr. and Mrs. Wilbur D. May, Beverly Hills, CA.

OPP.55:114; PP.55:030; Z.XVI:347; AB.57*:109; CK.10:255; HN.13:214p; JR.62*:7.10; KG.71:163; KG.85:163; LS.75:83; MJ.55*:127; PE.01a*:3; PJ.14*:53p; PS.08:97p; RR.09*:40; SG.96:5.10





Les femmes d'Alger (d'après Delacroix) (Toile F). Paris. 17-January/1955. Oil on canvas. 54.2 x 65 cm. Christie's. #52, 20201, 07/10/20. Formerly Eleanore and Daniel Saidenberg Collection, NY.

OPP.55:115; PP.55:031; Z.XVI:348; AB.57*:109; JR.62*:7.11; KG.71:164; KG.85:164; LS.75:84; MJ.55*:127; NY.71b*:72; PE.01a*:4; PH.58*:247

Les femmes d'Alger (d'après Delacroix) (Toile G). Paris. 18-January/1955. Oil on canvas. [65] 64,9 x 54 cm. The Art Collection, Inc. 2005. Formerly Christie's. #34, N07720, 11/07/01.

OPP.55:023; PP.55:032; Z.XVI:349; AB.57*:n/a; JL.71:177p; KG.71:166; KG.85:166; LS.75:85; MJ.55*:127; MU.55*:121G; NY.57i*:n/a; NY.59c*:10





Les femmes d'Alger (d'après Delacroix) I (I).
Paris. 20-January/1955. Lithograph on Arches.
27,8 x 34,8 cm. Christie's. #257, 1322, 04/28/03.

OPP.55:100; M:265.01B; PM.10:58p; PP.20*:256

**Les femmes d'Alger (d'après
Delacroix) I (I).** Paris. 20-January/1955.
Lithograph. 27,8 x 34,9 cm. Musée Picasso,
Paris. Dation 1979.

OPP.55:541; M:265.01; MPP:3452





Buste de femme (Jacqueline). Paris. 21-January/1955.
Drypoint. 34,3 x 25,3 cm. Private collection.

OPP.55:343; Ba:914; WR.96:458

Les femmes d'Alger (d'après Delacroix) (Étude II). Paris. 23-January/1955. Pen & India ink on paper. 42,1 x 55 cm. Musée Picasso, Paris. Dation 1979.

OPP.55:078; MPP:1498; PP.55:033;
Z.XVI:350; BA.03b*:n/a; MA.08a*:n/a;
PE.01a*:93; UP.00:999





Portrait d'homme (Commémoration du dixième anniversaire de la libération d'Auschwitz). Vallauris. 23-January/1955. Lithograph on Vélín paper. 31,5 x 46 cm. Artcurial. #236, IT4365, 09/26-10/03/23. Also Musée de l'Armée, Paris. (Inv 2018.7.1).

OPP.55:318; GU.00:106; PA.19d*:250; PF.10:71p

Portrait d'homme. Cannes. 23-January/1955. Print on paper (Published in L'Humanité) [After *Portrait d'homme (Commémoration du dixième anniversaire de la libération d'Auschwitz)*]. 60 x 42,6 cm. Musée Picasso, Paris. 1992. (Inv 515 AP/H/45/160).

OPP.55:513; PA.19d*:248





Les femmes d'Alger (d'après Delacroix) (Toile H). Paris. 24-January/1955. Oil on canvas. 130,2 x 162,3 cm. Helly Nahmad Collection, Monaco/London. (Inv P3499). Formerly Victor W. Ganz Collection, NY.

OPP.55:116; PP.55:034; Z.XVI:356; AB.57*:109; CB.11*:173p; FC.15:27p; GB.87:227; HF.07a:315p; HN.13*:221p; JB.08:162p; JR.62*:7.12; KG.71:165; KG.85:165; LE.21:257p; LO.98b*:n/a; LS.75:86; MF.97:45p; MJ.55*:127; PA.19d*:333; PE.01a*:5; PF.10*:100; PJ.14*:55p; PP.20*:244; RT.99*:67; SG.96:5.12; TV.06:299p; UP.00:1005; WR.80*:424p; YB.99*:223

Femme d'Alger (d'après Delacroix) (VII). Paris. 24-January/1955. Etching on paper. 27,8 x 35 cm. Sotheby's. #128, N08344, 09/26/07.

OPP.55:205; Ba:916.B; PF.10*:105





Les femmes d'Alger VII (d'après Delacroix).
Paris. 24-January/1955. Burin, aquatint &
scraping. 27,5 x 34,8 cm. Musée Picasso, Paris.
Dation 1979.

OPP.55:436; Ba:916; MPP:3027

**Les femmes d'Alger VI (d'après
Delacroix).** Paris. 24-January/1955.
Etching. 27,6 x 34,7 cm. Musée Picasso,
Paris.

OPP.55:428; Ba:915; MPP:3028





Les femmes d'Alger (d'après Delacroix) (Toile I). Paris. 25-January/1955. Oil on canvas. 96,8 x 129,9 cm. The Norton Simon Museum, Pasadena, CA. (Inv M.1986.3.P). Norton Simon Art Foundation.

OPP.55:103; PP.55:035; Z.XVI:353; GB.87:226; KG.71:169; KG.85:169; LS.75:93; MJ.55*:127; TI.71:63

La tauromachie: el Citor del toro (Para Fernando Bergmin). Vallauris. 25-January/1955. Brush & black ink. [15 x 10] 15,2 x 10,2 cm. Sotheby's. #310, N07839, 11/06/02. Formerly Christie's. #188, 11/28/89.

OPP.55:557; PP.55:268





Les femmes d'Alger (d'après Delacroix) (Toile J). Paris. 26-January/1955. Oil on canvas. 114 x 146 cm. Helly Nahmad Collection, Monaco/London. Formerly Sotheby's. #12, N08089, 05/03/05; Paul Rosenberg & Co., NY.

OPP.55:117; PP.55:036; Z.XVI:355; AB.57*:109; AB.57*:n/a; CB.11*:175p; GL.55*:n/a; HN.13*:223p; JR.62*:7.13; KG.71:170; KG.85:170; LE.21*:196; LS.75:94; MJ.55*:127; MU.55*:121J; PF.10*:101; PJ.14*:57p; WC.62*:69; WC.62*:69

Femmes d'Alger VIII (d'après Delacroix) (II). Cannes. 31-January/1955. Aquatint & etching. 23,5 x 35 cm. Sotheby's. #291, N08237, 11/02/06.

OPP.55:160; Ba:917.2; PP.20*:257





Les femmes d'Alger IX (d'après Delacroix) (II). Paris. 31-January/1955. Sugar-lift aquatint, drypoint, engraving, & scraping in black wove paper. 27,7 x 34,7 cm. Musée Picasso, Paris. Dation 1979. Also National Gallery of Art, Washington, DC. Rosenwald Print Purchase Fund.

OPP.55:399; Ba:918.2; MPP:3024; PJ.14*:61p; PP.20*:259

Les femmes d'Alger VIII (d'après Delacroix) (IV). Paris. 31-January/1955. Aquatint & scraping. 27,5 x 34,7 cm. Musée Picasso, Paris. Dation 1979.

OPP.55:429; Ba:917.4; MPP:3021





Les femmes d'Alger IX (d'après Delacroix) (I). Paris. 31-January/1955. Burin, aquatint & scraping on Rives Vélin paper. 27,8 x 34,5 cm. Musée Picasso, Paris. Dation 1979.

OPP.55:431; Ba:918.1; MPP:3023

Les femmes d'Alger VIII (d'après Delacroix) (I). Paris. 31-January/1955. Burin, aquatint & scraping. 27,5 x 34,7 cm. Musée Picasso, Paris. Dation 1979.

OPP.55:433; Ba:917.1; MPP:3018





Les femmes d'Alger VIII (d'après Delacroix) (III). Paris. 31-January/1955. Burin, aquatint & scraping. 27,5 x 34,7 cm. Musée Picasso, Paris. Dation 1979.

OPP.55:434; Ba:917.3; MPP:3020

Les femmes d'Alger IX (d'après Delacroix) (III). Paris. 31-January/1955. Burin, aquatint & scraping. 27,8 x 34,5 cm. Musée Picasso, Paris. Dation 1979.

OPP.55:435; Ba:918.3; MPP:3025; PP.20*:258





Les femmes d'Alger (d'après Delacroix) VIII (II). Paris. 31-January/1955. Aquatint. 27,8 x 34,5 cm. Musée Picasso, Paris. Dation 1979.

OPP.55:539; Ba:617.2; MPP:3019

Les femmes d'Alger VIII (d'après Delacroix) (V). Paris. 31-January/1955. Aquatint & scraping. 27,5 x 34,7 cm. Musée Picasso, Paris. Dation 1979.

OPP.55:430; Ba:917.5; MPP:3022





Les femmes d'Alger (d'après Delacroix) (Étude) II. Paris. 3-February/1955. India ink on squared paper. 21 x 27 cm. Musée Picasso, Paris. Dation 1979.

OPP.55:079; MPP:1499; PP.55:037;
PA.79a*:570; RP.06*:117; SD.05*:129;
UP.00:1000

Le peintre sur la plage. Paris. 5-February/1955. Aquatint with sugarlift, edition 50. 47 x 83,2 cm. Staatsgalerie Stuttgart. (Inv A 55/1797). Graphische Sammlung. Also Sprengel Museum, Hannover; Christie's. #227, 1074, 05/01/02.

OPP.55:039; B.I:769; Ba:919.Bb;
CN.56*:24; ED.07*:71; GM.81*:300;
IC.05*:102; RM.07*:116p; TO.99*:107





Les femmes d'Alger II (d'après Delacroix) (III). Cannes. 5-February/1955. Lithograph on Arches. [23,5 x 34] 23,2 x 33,7 cm. Ledor Fine Art, Berkeley, CA.

OPP.55:135; M:266.03B; MG.18*:119p;
PM.10:61p; PP.20*:261

Les femmes d'Alger (d'après Delacroix) (I). Paris. 5-February/1955. Engraving on lithographic stone on Arches. 23,4 x 33,8 cm. Fundación Pablo Ruiz Picasso, Museo Casa Natal.

OPP.55:348; M:266.01; MG.18*:118p;
PM.10:59p





Les femmes d'Alger (d'après Delacroix) (II). Paris. 5-February/1955. Engraving on lithographic stone on Arches. 23,3 x 33,6 cm. Musée Picasso, Paris. Dation 1979.

OPP.55:349; M:266.02; MPP:3454;
MG.18*:118p; PM.10:60p; PP.20*:260

Les femmes d'Alger II (d'après Delacroix) (IV). Paris. 5-February/1955. Lithograph. 23,1 x 33,6 cm. Musée Picasso, Paris. Dation 1979.

OPP.55:440; M:266.04; MPP:3456





Les femmes d'Alger II (d'après Delacroix) (II). Paris. 5-February/1955. Lithograph. 23,3 x 33,7 cm. Musée Picasso, Paris. Dation 1979.

OPP.55:542; M:266.03; MPP:3455

Les femmes d'Alger (d'après Delacroix) (Toile K). Paris. 6-February/1955. Oil on canvas. 129,8 x 161,9 cm. Private collection. Formerly Victor W. Ganz Collection.

OPP.55:118; PP.55:038; Z.XVI:354; AB.57*:109; BS.55:232; CG.12:64p; JR.62*:7.14; KG.71:171; KG.85:171; LS.75:95; MF.06:251p; MF.97:46p; MJ.55*:127; PE.01a*:6; SG.96:5.13





Les femmes d'Alger II (d'après Delacroix) (Étude). Cannes. 7-February/1955. Pen & India ink on paper. 35 x 43,5 cm. Musée Picasso, Paris. Dation 1979.

OPP.55:048; MPP:1500; PP.55:039; Z.XVI:351; BA.03b*:n/a; HO.16a*:137p

Les femmes d'Alger (d'après Delacroix) (Toile L). Paris. 9-February/1955. Oil on canvas. 130,2 x 96,8 cm. Nationalgalerie, Museum Berggruen, Staatlichen Museen zu Berlin. Formerly Christie's. #32, 2437, 05/04/11.

OPP.55:119; PP.55:040; Z.XVI:352; AB.57*:109; AB.57*:109p; CG.12*:100; GB.87:222; HN.13:215p; JR.62*:7.15; KG.71:167; KG.85:167; LS.75:96; MF.06:251p; MJ.55*:127; MU.55*:127L; SG.96:5.14; UP.00:1008





Les femmes d'Alger (d'après Delacroix) (Toile M). Paris. 11-February/1955. Oil on canvas. 130,2 x 195 cm. Lakenbleker BV. Formerly Victor W. Ganz Collection, NY.

OPP.55:003; PP.55:041; Z.XVI:357; AB.57*:109; JF.03:9.11; JR.62*:7.16; KG.71:172; KG.85:172; LS.75:87; MF.97:47p; MJ.55*:127; MP.02*:178; PE.01a*:7; SG.96:5:15; TG.88*:4; TG.94:36p; UP.00:1004; WR.80*:424p; YB.99*:224

Les femmes d'Alger (d'après Delacroix) (Toile N). Paris. 13-February/1955. Oil on canvas. 114 x 146 cm. Mildred Lane Kemper Art Museum (Washington University, St. Louis). University Purchase, Steinberg Fund, 1960. Formerly Paul Rosenberg & Co, NY.

OPP.55:006; PP.55:042; Z.XVI:359; GB.87:228; HN.13:213p; HS.98*:126; JR.62*:7.18; KG.71:173; KG.85:173; LS.75:97; MJ.55*:127; MP.02*:179; PE.01a*:8; PF.10*:102; PS.08:94p; SG.96:5:16; TV.06:298p; WS.93*:115; YB.99*:226



Les femmes d'Alger (d'après Delacroix) (Toile O). Paris. 14-February/1955. Oil on canvas. 114 x 146,4 cm. Hamad bin Jassim bin Jaber Al Thani Collection. Formerly Christie's. #8A, 3739, 05/11/15; Private collection, Europe. Courtesy Libby Howie; Victor W. Ganz Collection, NY.



OPP.55:001; PP.55:043; Z.XVI:360;
AB.08*:215p; AB.57*:109; AB.57*:109p;
AC.81:131p; AP.92:32; BK.96:166-167p;
BS.12*:120; BS.55:347p; DA.03:63; DL.67*:73;
DM.78*:59; DT.78:87; DW.05:81p; GB.14:227p;
GB.87:229; GC.07:159p; GC.96:264-265p;
GD.77:80p; GL.55*:n/a; GP.96:22p; HG.71:148p;
HJ.83:119p; HJ.96:149p; JB.08:95p; JB.65:103;
JB.92:361p; JC.56:n/a; JF.96:161p; JL.06:201p;
JL.66*:237; JL.71:178-179p; JM.93:112p;
JR.62*:7.18; JV.06:143p; KG.71:159; KG.85:159;
KS.62:47; LS.75:162; MF.06:236p; MF.97:48p;
MG.80:227p; MI.24*:n/a; MJ.55*:127;
MP.02*:180; MU.55*:121; NY.68b*:145;
NY.69f*:39; PA.93b*:265; PD.09:414p;
PD.65:220p; PD.69:89p; PE.01a:115p;
PH.58*:255; RM.07:17p; RP.60*:196; RP.81:24.2;
RR.09*:41; RS.88:153p; SG.06:145p;
SG.96:5.17; SP.05:151p; SY.75*:33; TG.02:74p;
TG.88*:5; TI.71:114p; TO.64*:263; TV.06*:37;
UA.80:10; UP.00:1006; VO.16:142p;
WR.80*:425p; WR.96*:456p; WS.93:49p;
WW.91:523p; YB.99*:225

Variation sur le thème de Les Ménines: Visiteurs divins à l'atelier. Paris. 18-February/1955. Aquatint on Arches, edition 50. 49,6 x 64,7 cm. Sotheby's. #258, L00119, 06/21/00. Also Private collection. Courtesy Galería Guillermo de Osma, Madrid.

OPP.55:036; B.I:770; Ba:920.IIBa;
CH.04*:20; CN.56*:25; FC.00*:94;
KB.01*:150; MF.10*:205p; WC.62*:70





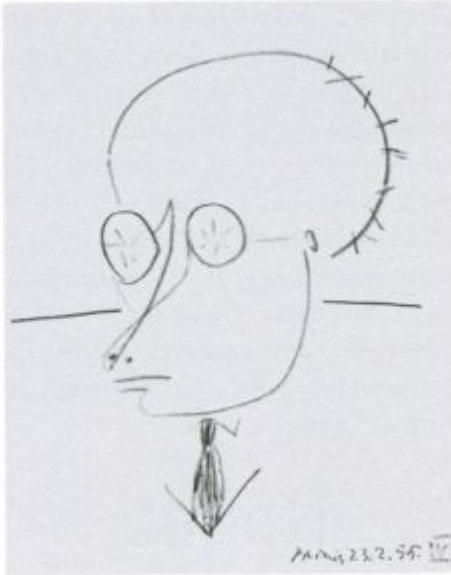
Caricature de Jaume Sabartés. Paris. 23-February/1955.
Pencil. 27 x 21 cm. Private collection.

OPP.55:080; PP.55:042a; MB.89:431

Canciones de verano dedicadas a Don Jaume Sabartés y Gual. Cannes. 23-February/1955. Black pencil. S/U. Musée Picasso, Paris.

OPP.55:235; CW.89:431p





Caricature de Jaume Sabartés. Paris. 23-February/1955. Colored pencil on paper [OIC]. 27 x 21 cm. Anrigua Colección Pilar Solano, Barcelona.

OPP.55:525; PP.19:272p

Canciones de verano dedicadas a Don Jaime Sabartés y Gual. Cannes. 23-February/1955. Ink on paper. S/U. Musée Picasso, Paris.

OPP.55:544





Canciones de verano dedicadas a Don Jaime Sabartés y Gual. Cannes. 23-February/1955. Ink on paper. S/U. Musée Picasso, Paris.

OPP.55:545

Les femmes d'Alger (d'après Delacroix) (Étude). Paris. 28-February/1955. India ink. 25 x 31 cm. Private collection.

OPP.55:081; PP.55:044; Z.XVI:361





Les femmes d'Alger (d'après Delacroix) (Étude). Paris. 28-February/1955. India ink. 25 x 31 cm. Private collection.

OPP.55:082; PP.55:045; Z.XVI:358

Tête de femme. Paris. 3-March/1955. India ink. 32 x 24 cm. Private collection.

OPP.55:083; PP.55:046; Z.XVI:362





Trois personnages II. Paris. 4-March/1955.
India ink & wash. 24 x 32 cm. Private collection.

OPP.55:084; PP.55:048; Z.XVI:365

Homme et femme nus III. Paris. 4-March/1955. India ink & wash. 24 x 32 cm.
Private collection.

OPP.55:085; PP.55:049; Z.XVI:366





Jean Cocteau reçu à l'Académie Française IV.
Paris. 4-March/1955. India ink & wash. 24 x 32
cm. Private collection.

OPP.55:086; PP.55:050; Z.XVI:367

Deux femmes nues V. Paris. 4-
March/1955. India ink & wash. 24 x 32 cm.
Private collection.

OPP.55:087; PP.55:051; Z.XVI:368





Paysage à l'arbre VI. Paris. 4-March/1955. India ink & wash. 24 x 32 cm. Private collection.

OPP.55:088; PP.55:052; Z.XVI:364

Nu couché et nu agenouillé VI. Paris. 4-March/1955. Wash. 24 x 32 cm. Private collection.

OPP.55:089; PP.55:053; Z.XVI:369





Visage. Paris. [1954~] 4-March/1955. Red earthenware oval medallion, edition 500. [6] 5,7 cm. Sotheby's. #419, N07931, 10/31/03.

OPP.55:303; AR:243; CE.04*:325

Montagne Sainte-Victoire (Pour John et Douglas). Paris. 4-March/1955. India ink & ink wash on paper. [20,3 x 26] 20,8 x 26,6 cm. Christie's. #2, 13572, 06/08-09/16. Formerly Christie's. #573, 11/30/88.

OPP.55:412; PP.55:046a; JR.99*:242p



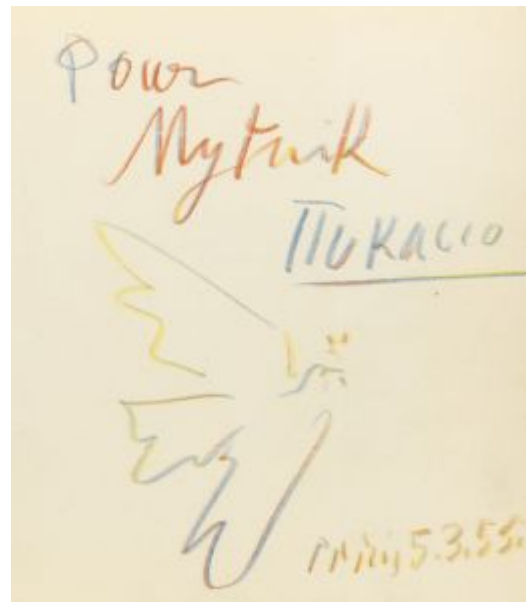


Paysage à l'arbre. Paris. 4-March/1955. Wash.
21 x 27 cm. Private collection.

OPP.55:442; PP.55:047; Z.XVI:363

Colombe (Pour Andrei Mytnik). Paris. 5-March/1955. Wax crayon on front flyleaf of book Maurice Raynal, Picasso. 17,7 x 16 cm. Sotheby's. #57, L13406, 11/27/13. Formerly Sotheby's. #145, L12406, 11/28/12.

OPP.55:331





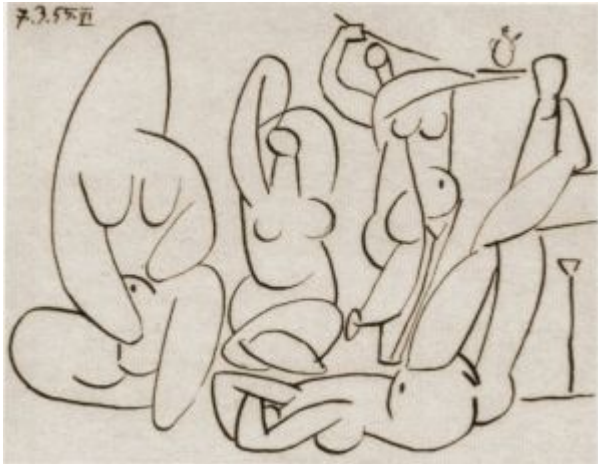
Les femmes d'Alger (d'après Delacroix) (Étude). Paris. 7-March/1955. India ink. 24 x 32 cm. Private collection.

OPP.55:090; PP.55:054; Z.XVI:370

Les femmes d'Alger (d'après Delacroix) (Étude) V. Paris. 7-March/1955. India ink. 24 x 32 cm. Private collection.

OPP.55:091; PP.55:055; Z.XVI:371





**Les femmes d'Alger (d'après Delacroix)
(Étude) VI.** Paris. 7-March/1955. India ink. 24 x
32 cm. Private collection.

OPP.55:092; PP.55:056; Z.XVI:372

**Les femmes d'Alger (d'après
Delacroix) (Étude) VII.** Paris. 7-
March/1955. India ink. 24 x 32 cm. Private
collection.

OPP.55:093; PP.55:057; Z.XVI:373





Maison closé: le chocolat I. Paris. 9-March/1955. Aquatint. 49,5 x 64,5 cm. Beck and Egeling International Fine Art. 2006.

OPP.55:146; Ba:921.II; RM.07*:115p

Maison close: le chocolat I. Paris. 9-March/1955. Sugar-lift aquatint, etching, engraving & scraper on Arches wove paper. 49,5 x 64,5 cm. Galerie Michael, Beverly Hills, CA. 2007.

OPP.55:163; Ba:921.I





Maison closé: le chocolat II (La Célestine). Cannes. 11-March/1955. Sugarlift aquatints with etching, engraving & drypoint. 44,7 x 64,5 cm. Christie's. #0382, 7419, 09/18/07.

OPP.55:206; Ba:922.B; CS.15:102p

Le peintre et son modèle. Paris. 11-March/1955. India ink on paper. 36,8 x 52,1 cm. Marina Picasso Collection.

OPP.55:375





Maison closé: le chocolat II (La Célestine). Paris. 11-March/1955. Aquatint, etching, burin, scraper & drypoint. 45,2 x 65,2 cm. Musée Picasso, Paris. Dation 1979.

OPP.55:540; Ba:11.Bis; MPP:3029

Femme nue et buste de femme. Paris. 12-March/1955. India ink. 24 x 32 cm. Private collection.

OPP.55:094; PP.55:058; Z.XVI:374





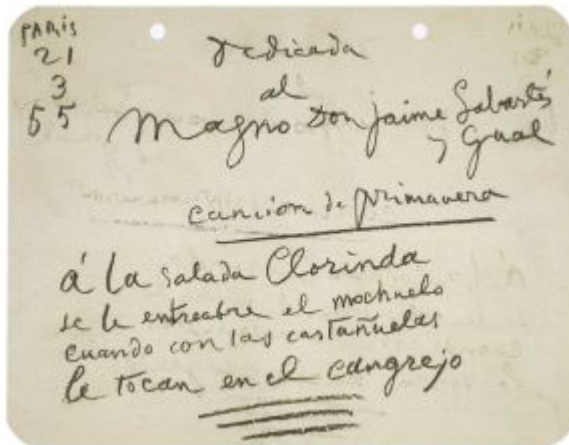
Les femmes d'Alger II (d'après Delacroix) (IV). Paris. [5-February~] 17-March/1955. Lithograph on Arches. 23,2 x 33,7 cm. Christie's. #258, 1322, 04/28/03.

OPP.55:026; M:266.04.B; GB.14:26p; MG.18*:119p; PF.10*:104; PM.10:62p; PP.20*:262; WW.91:536p

Buste de femme à la queue de cheval (Jacqueline). Paris. 19-March/1955. Aquatint with drypoint on Arches, edition 50. 75,5 x 56,5 cm. Christie's. #102, 15681, 03/28/18. Also Graphische Sammlung der ETH Zürich; Mr. & Mrs. Mitchell Miller Collection.

OPP.55:024; B.I:771; Ba:927; CN.56*:23; MD.02*:335p; PJ.14*:65p; WC.62*:71





Canción de primavera. Dedicada al magno Don Jaime Sabartés y Gual. Paris. 21-March/1955. Graphite pencil on paper. 17,3 x 21,9 cm. Museu Picasso, Barcelona. Fondo Jaime Sabartés.

OPP.55:524; PP.19:270p

Coq et colombe. Paris. 26-March/1955. Pencil. 24 x 32 cm. Private collection.

OPP.55:095; PP.55:059; Z.XVI:376





Coq et colombe. Vallauris. 28-March/1955. Pencil on paper. 24 x 32 cm. Private collection.

OPP.55:207; PP.55:060; Z.XVI:375; PF.10*:7

Lettre manuscrite à Max Pellequer.
Vallauris. 28-March/1955. Ink on paper.
S/U. Piasa. #44, 2142, 02/15/24. Formerly
Max Pellequer Collection.

OPP.55:573





Taureau. Vallauris. 29-March/1955. White earthenware pitcher, decoration in engobes, knife engraved, edition 100. 30,5 x 21,5 cm. Christie's. #23, 6683, 10/09/02.

OPP.55:016; AR:255; CE.04*:266; LR.07*:54; MC.88*:n/a

Bouquet. Vallauris. 29-March/1955. Glazed white ceramic platter, painted in colors, edition 450. 35,9 x 29,5 cm. Christie's. #227, 9768, 10/31/01.

OPP.55:030; AR:254; PE.17*:83p





Note autographe à Inès. Vallauris. 29-March/1955. Ink. S/U. Artcurial. #290, 1331, 10/22/07.

OPP.55:236

Visage de faune en relief. Vallauris. 30-March/1955. White clay decorated with engobe & partially glazed. 17,2 x 17,2 x 6,5 cm. Museu Picasso, Barcelona. Donation Jacqueline Roque Picasso, 1982.

OPP.55:195; MPB:112.455





Visage de faune. Vallauris. 30-March/1955. Partially glazed ceramic bowl. 18,1 cm. Christie's. #283, 4232, 06/25-26/12.

OPP.55:307; AR:256

Visage de faune. Vallauris. 30-March/1955. Partially glazed terracotta bowl. 17,5 cm. Christie's. #284, 4232, 06/25-26/12.

OPP.55:308; AR:257





Faune. Vallauris. 30-March/1955. Bowl with brown & light green enamel on sand colored background. 16 cm. Private collection.

OPP.55:342; B.III:55; TO.04*:208

Le sein. Vallauris. 31-March/1955. Earthenware bowl, partially glazed. 17,8 cm. Christie's. #145, 9315, 03/21/02.

OPP.55:038; AR:271; B.III:58





Sylvette. Vallauris. 31-March/1955. Partially glazed terracotta bowl, edition 100. 18 cm. Sotheby's. #102, W03703, 03/20/03.

OPP.55:096; AR:267; B.III:56; GB.14*:69

Le sein. Vallauris. 31-March/1955. Partially glazed terracotta bowl, edition 100. 18 cm. Sotheby's. #104, W03703, 03/20/03.

OPP.55:097; AR:272





Oursin. Vallauris. 31-March/1955. Painted & glazed white earthenware bowl, edition 150. 18 cm. Hélène Bailly Gallery. Formerly Sotheby's. #99, W03703, 03/20/03.

OPP.55:099; AR:268

Profil de poisson. Vallauris. 31-March/1955. Glazed white ceramic bowl painted in colors, glazed in black on the underside, edition 100. 17,8 cm. Christie's. #423, 1412, 09/28/04.

OPP.55:110; AR:264; B.III:54





Sylvette. Vallauris. 31-March/1955. Partially glazed white ceramic bowl, edition 100. 17,5 cm. Christie's. #211, 1428, 11/02/04.

OPP.55:112; AR:266; B.III:56

Oursin. Vallauris. 31-March/1955. Partially glazed ceramic bowl, edition 100. 17,8 cm. Christie's. #473, 5814, 04/07/05.

OPP.55:124; AR:269; B.III:57





Oursin. Vallauris. 31-March/1955. Painted & partially glazed terracotta bowl. 17,5 cm. Sotheby's. #241, W07716, 07/12/07.

OPP.55:203; AR:270

Oiseau. Cannes. 31-March/1955. White terracotta bowl, partially glazed & painted. 18 cm. Artcurial. #395, 1331, 10/22/07.

OPP.55:238; AR:260; B.III:52





Sauterelle sur une branche. Vallauris. 31-March/1955. Painted & partially glazed terracotta bowl, edition 100. 17,5 cm. Christie's. #38, 5594, 10/22/09.

OPP.55:253; AR:259

Oursin bleu. Vallauris. 31-March/1955. White clay decorated with engobe & partially glazed. 18 x 18 x 6,8 cm. Museu Picasso, Barcelona. Donation Jacqueline Roque Picasso, 1982.

OPP.55:304; MPB:112.431; TO.04*:209





Oiseau. Vallauris. 31-March/1955. Partially glazed terracotta bowl. 17 cm. Christie's. #266, 4232, 06/25-26/12.

OPP.55:309; AR:261

Poisson de profil. Vallauris. 31-March/1955. Partially glazed terracotta bowl. 17,5 cm. Christie's. #272, 4232, 06/25-26/12.

OPP.55:311; AR:265





Sauterelle sur une branche. Vallauris. 31-March/1955. Partially glazed ceramic bowl. 17,8 cm. Christie's. #269, 4232, 06/25-26/12.

OPP.55:314; AR:258; B.III:51

Sylvette. Vallauris. 31-March/1955. Painted ceramic plate [Variant of *Sylvette*]. 18 cm. Phillips. #88, UK030122, 01/19-20/22. Also Krause Kunsthandel, Köln.

OPP.55:377; GB.14*:68





Lettre manuscrite. Vallauris. 31-March/1955. Ink on paper. 12 x 16,9 cm. KOTTE Autographs GmbH, Rosshaupten.

OPP.55:581

Pêcheur à la ligne. Vallauris. 6-April/1955. Partially glazed ceramic bowl, edition 100. 17,8 cm. Christie's. #457, 5814, 04/07/05.

OPP.55:123; AR:262; B.III:53





Pêcheur à la ligne. Vallauris. 6-April/1955.
Partially glazed terracotta bowl. 17,2 cm.
Christie's. #267, 4232, 06/25-26/12.

OPP.55:313; AR:263

Visage. Vallauris. 8-April/1955.
Earthenware plate, glazed, painted in
black, white, green & red. 39,2 cm.
Sotheby's. #466, N07717, 11/02/01.

OPP.55:031; AR:275; B.III:61





Visage. Vallauris. 8-April/1955. White earthenware dish, glazed, painted in black, white, green & blue, edition 200. 39,5 cm. Sotheby's. #467, N07717, 11/02/01.

OPP.55:033; AR:273; B.III:59

Visage. Vallauris. [8-April]/1955. Earthenware plate, partially glazed, edition 200. 39,5 cm. Sotheby's. #467, N07717, 11/02/01.

OPP.55:041; AR:276



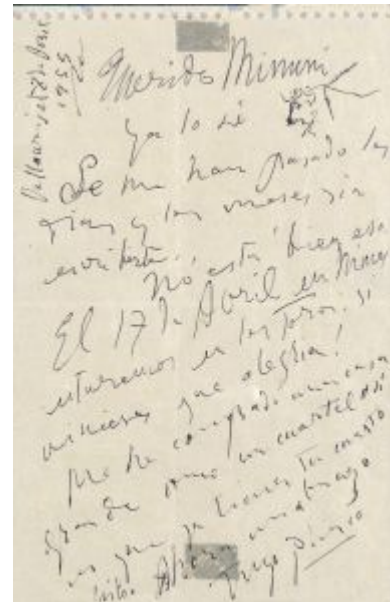


Visage dans un ovale. Vallauris. 8-April/1955. Earthenware plate, partially glazed, edition 100. 40 cm. Christie's. #146, 6683, 10/09/02.

OPP.55:043; AR:274; B.III:60

Lettre dédicacé. Vallauris. 8-April/1955. Card mount. 21 x 13,5 cm. Bonhams. #53, 26710, 03/23/21. Formerly Sotheby's. #88, L03405, 12/09/03.

OPP.55:106





Visage masque en relief. Vallauris. 8-April/1955.
Painted & glazed ceramic; plat ovale. 39,7 cm.
Sotheby's. #336, N10148, 11/13/19. Formerly
Marina Picasso Collection.

OPP.55:521

Visage. Vallauris. 9-April/1955. Painted &
glazed ceramic oval platter. 40 cm.
Sotheby's. #625, L16005, 02/05/16.
Formerly Marina Picasso Collection.

OPP.55:410





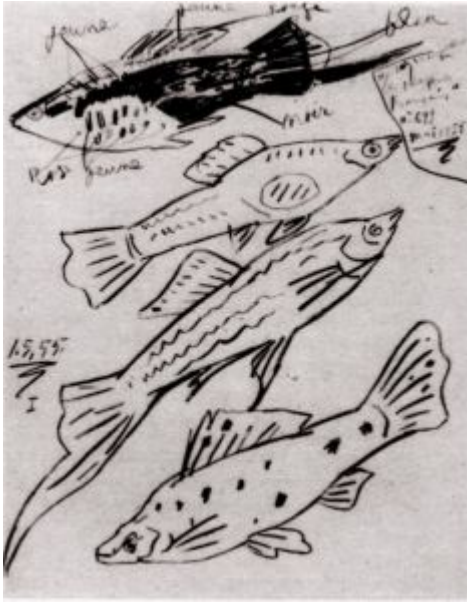
La plante. Vallauris. 26-April/1955. Brown ink on paper. [64 x 49] 66 x 51 cm. Musée National d'Art Moderne, Centre Georges Pompidou, Paris. (Inv AM.1984-648). Donation Louise et Michel Leiris, 1984.

OPP.55:137; PP.55:074a1; GB.14*:102

Lettre manuscrite à Max Pellequer.
[Vallauris]. 26-April/1955. Ink on paper.
S/U. Piasa. #45, 2142, 02/15/24. Formerly
Max Pellequer Collection.

OPP.55:579





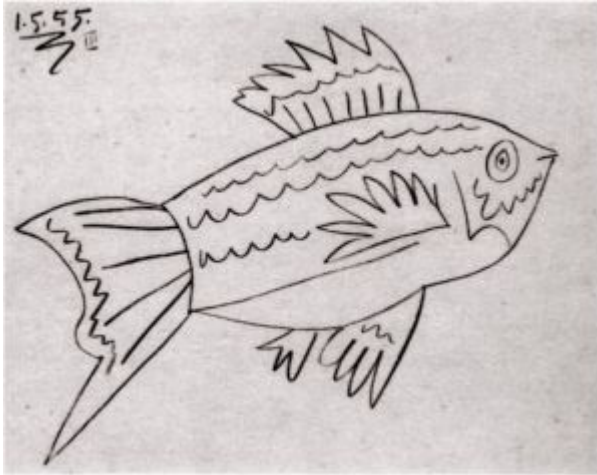
Poisson I. [Cannes]. 1-May/1955. Pencil. 21 x 27 cm. Private collection.

OPP.55:208; PP.55:061; Z.XVI:379



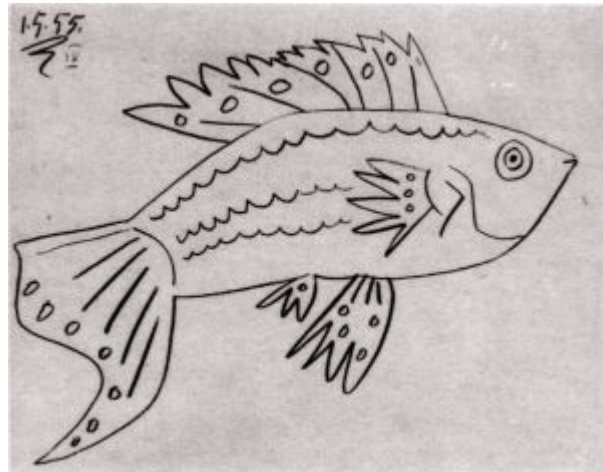
Poisson II. [Cannes]. 1-May/1955. Pencil. 27 x 21 cm. Private collection.

OPP.55:209; PP.55:062; Z.XVI:380



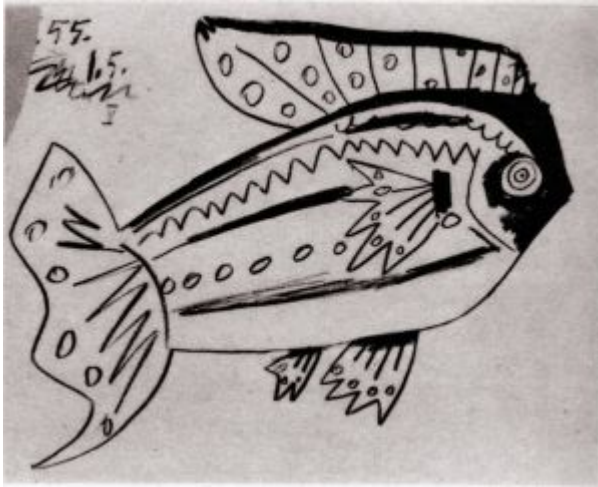
Poisson III. [Cannes]. 1-May/1955. Pencil. 21 x 27 cm. Private collection.

OPP.55:210; PP.55:063; Z.XVI:377



Poisson IV. [Cannes]. 1-May/1955. Pencil. 21 x 27 cm. Private collection.

OPP.55:211; PP.55:064; Z.XVI:378

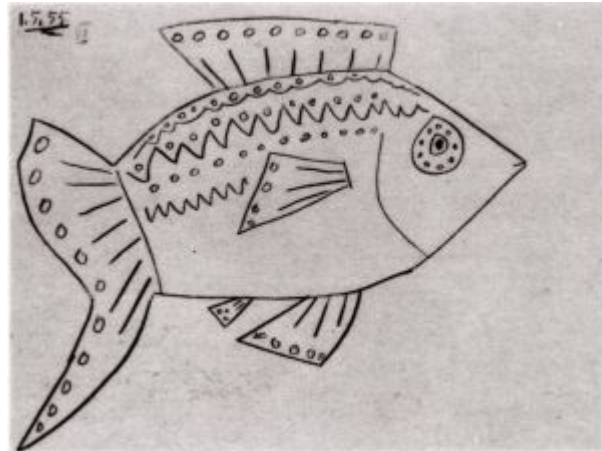


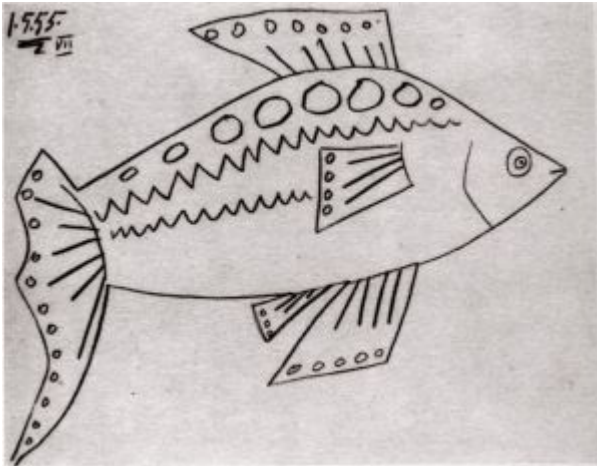
Poisson V. [Cannes]. 1-May/1955. Pencil. 21 x 27 cm. Private collection.

OPP.55:212; PP.55:065; Z.XVI:382

Poisson VI. [Cannes]. 1-May/1955. Pencil. 21 x 27 cm. Private collection.

OPP.55:213; PP.55:066; Z.XVI:381



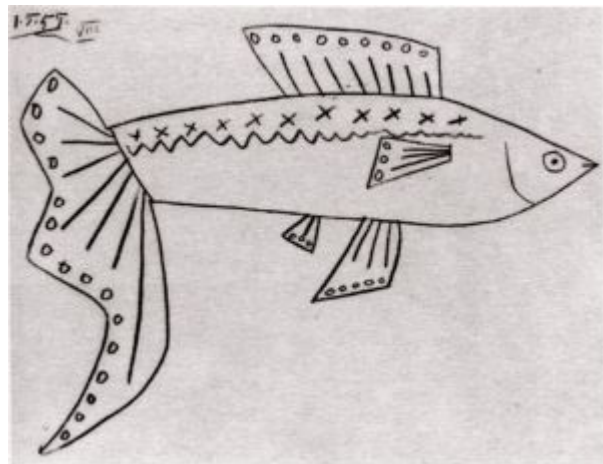


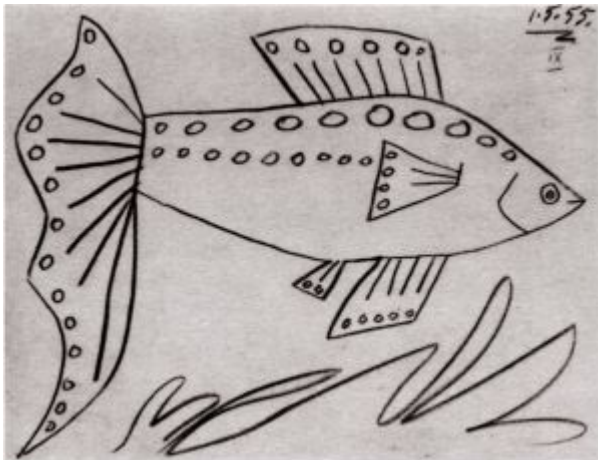
Poisson VII. [Cannes]. 1-May/1955. Pencil. 21 x 27 cm. Private collection.

OPP.55:214; PP.55:067; Z.XVI:383

Poisson VIII. [Cannes]. 1-May/1955. Pencil. 21 x 27 cm. Private collection.

OPP.55:215; PP.55:068; Z.XVI:384



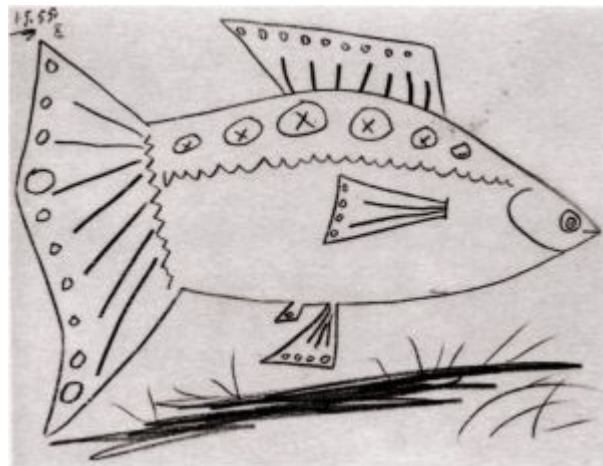


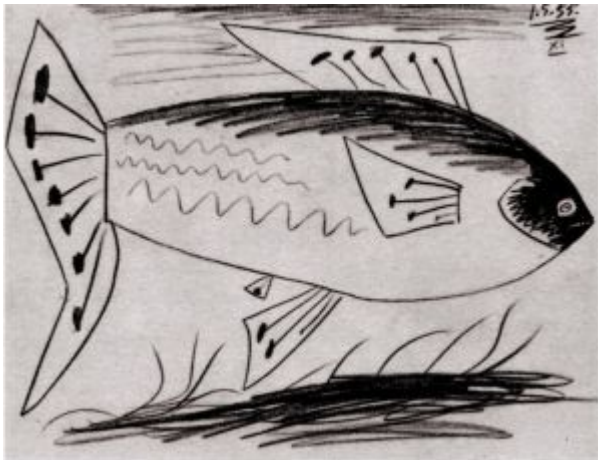
Poisson IX. [Cannes]. 1-May/1955. Pencil. 21 x 27 cm. Private collection.

OPP.55:216; PP.55:069; Z.XVI:386

Poisson X. [Cannes]. 1-May/1955. Pencil. 21 x 27 cm. Private collection.

OPP.55:217; PP.55:070; Z.XVI:387





Poisson XI. [Cannes]. 1-May/1955. Pencil. 21 x 27 cm. Private collection.

OPP.55:218; PP.55:071; Z.XVI:385

Portrait de femme (Profil gauche). [Cannes]. 3-May/1955. India ink on paper. 66 x 50 cm. Private collection.

OPP.55:250; PP.55:072; Z.XVI:388; PJ.14*:66p





Portrait de femme, profil gauche (Jacqueline). [Cannes].
3-May/1955. Charcoal & India ink on paper. 66 x 50,8 cm.
Catherine Hutin-Blay Collection, Paris. Formerly Jacqueline
Roque Picasso Collection.

OPP.55:272; PP.55:073; Z.XVI:389; BA.61b*:n/a;
BA.90a*:58; GL.81*:40; MA.91a*:73; MM.06*:36;
MR.03*:97p; PA.82a*:n/a; PD.19*:23; PJ.14*:67p;
WR.96:459p



Portrait de Jacqueline. [Cannes]. 4-May/1955.
Charcoal & India ink on paper. 65 x 50 cm. Private
collection.

OPP.55:279; PP.55:074; Z.XVI:390; QP.64:240p;
WR.96:459p



Portrait de Jacqueline au foulard de profil. [Cannes]. 4-May/1955. Ink & gouache on paper. [65,8 x 50,7] 66 x 50,5 cm. Catherine Hutin-Blay Collection, Paris. Formerly Jacqueline Roque Picasso Collection.

OPP.55:354; PD.19*:24; PJ.14*:68p

Le vase aux trois visages. Cannes. 13-May/1955. Bronze. [43,5 x 41] 43,8 x 43,7 cm. Musée National d'Art Moderne, Centre Georges Pompidou, Paris. (Inv AM1984-664). Donation Louise et Michel Leiris 1984; Musée d'art et d'industrie de Roubaix (07/07/05).

OPP.55:139; PP.55:074a2; WS:502; CE.04*:348; OS.56*:n/a





Tête de faune. Vallauris. 28-May/1955. Red earthenware medallion, edition 150. 24 cm. Sotheby's. #374, AM0888, 05/27/03.

OPP.55:102; AR:282

Toros en Vallauris 1955. Vallauris. [June]/1955. Linoleum cut printed in colors, edition 200. 66,5 x 52 cm. Scottish National Gallery of Modern Art, Edinburgh. (Inv GMA 5317). Also Christie's. #396, 2487, 11/30/00; Museu Picasso, Barcelona.

OPP.55:022; B.I:1265; Ba:1029; MPB:70.866; BR.03*:n/a; CE.04*:72; JM.93:111p; MG.00:25; MG.10a*:49; MM.11b*:12; WI.07*:n/a





Tête de faune. Vallauris. June/1955. Wash. 65 x 50 cm.
Private collection.

OPP.55:224; PP.55:078; Z.XVI:394; GT.10:90.2



Tête de faune. Vallauris. June/1955. Wash. 65 x 50
cm. Private collection.

OPP.55:225; PP.55:079; Z.XVI:395



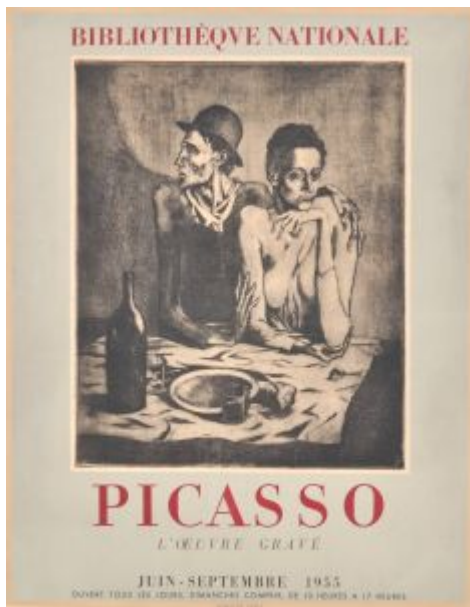
Vase avec fleurs. Vallauris. June/1955. Brush & ink, wash & pencil on paper. 65,8 x 50,4 cm. Sotheby's. #534, L16005, 02/05/16. Formerly Marina Picasso Collection.

OPP.55:408; PP.55:080; Z.XVI:397; CN.94*:n/a; GE.04*:n/a; KU.99*:n/a



Tête de femme. Vallauris. June/1955. Wash. 65 x 50 cm. Private collection.

OPP.55:443; PP.55:081; Z.XVI:398



Picasso: l'œuvre gravé. Paris. June~September/1955. Poster [After *La Suite des Saltimbanques L01 (Le repas frugal)*]. S/U. Private collection.

OPP.55:350

Tête d'homme (Pour Robert Maillard). Cannes. 2-June/1955. Colored crayons on paper. [36 x 27] 35,5 x 26,3 cm. Omer Tiroche Gallery, London. Formerly Sotheby's. #303, L18008, 06/20/18; Sotheby's. #171, PF1213, 11/19/12.

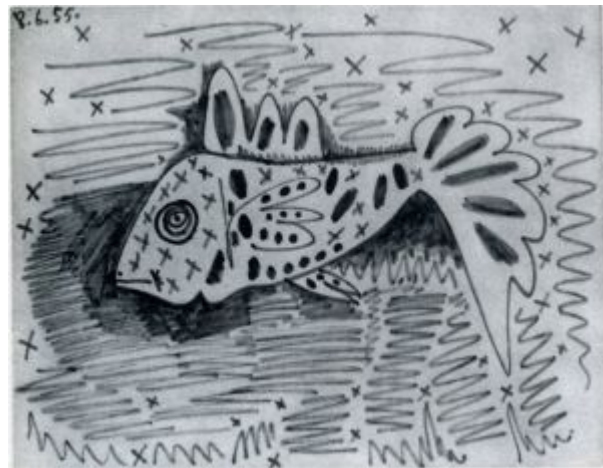
OPP.55:330





Poisson. Cannes. 8-June/1955. India ink. 50 x 65 cm. Private collection.

OPP.55:221; PP.55:075; Z.XVI:391



Poisson. Cannes. 8-June/1955. India ink. 50 x 65 cm. Private collection.

OPP.55:222; PP.55:076; Z.XVI:392



Poisson. Cannes. 8-June/1955. Wash. 50 x 65 cm. Private collection.

OPP.55:223; PP.55:077; Z.XVI:393

Poisson (Pour mon ami Henri-Georges Clouzot). Cannes. 10-June/1955. Felt-tip pen on paper. 50,5 x 66 cm. Sotheby's. #225, PF8008, 07/03/08.

OPP.55:240





Colombe sur carte postale (Pour Jean-Claude). Cannes. 16-June/1955. Ballpoint pen on postcard. S/U. Artcurial. #359, 2399, 12/16/13.

OPP.55:372

Dédicace (Pour Cristina). Cannes. 17-June/1955. Bold turquoise fountain pen ink on page. 15,3 x 22,8 cm. International Autograph Auctions Europe. #353, 250320, 2020.

OPP.55:523





Tête de faune jouant de la diaule. Vallauris. 21-June/1955.
Wash. 65 x 50 cm. Private collection.

OPP.55:444; PP.55:082; Z.XVI:399

Scène de tauromachie (Le picador soulevé). Nice. Summer/1955. Oil on canvas. 79,5 x 190,4 cm. Catherine Hutin-Blay Collection, Paris. Formerly Jacqueline Roque Picasso Collection.

OPP.55:008; PP.55:145; HP.66:49p;
MA.86*:32; MM.85a*:41; PD.19*:111;
PT.05*:51; WW.91:522p





La plage à la Garoupe I. Nice. Summer/1955.
Oil on canvas. 80 x 190 cm. The National Museum
of Western Art, Tokyo. Formerly Marina Picasso
Collection. (Inv 13308)..

OPP.55:009; PP.55:138; HP.66:22p; IC.05*:103;
MP.81*:258; PD.65:229p; QP.64:89p;
WW.91:524p

La plage à la Garoupe II. Nice.
Summer/1955. Oil on canvas. 80 x 190 cm.
José Mestre Collection, Barcelona. Formerly
Sotheby's. #50, L08002, 02/05/08;
Sotheby's. #46, N08314, 05/08/07;
Bernard Ruiz-Picasso Collection. Courtesy
Fundación Almine & Bernard Ruiz-Picasso
para el Arte.

OPP.55:010; PP.55:139; AC.81:59p;
GA.00*:80; HP.66:23p; IC.05*:104;
MG.04c*:23; WW.91:524p





Nature morte sur une commode. Nice.
Summer/1955. Oil on canvas. 80 x 190 cm. Marina
Picasso Collection. (Inv 13313). Courtesy Galerie
Jan Krugier, Geneva.

OPP.55:011; PP.55:140; PP.55:266; HP.66:17p;
MP.81*:259; QP.64:66p; WW.91:524p

Femme nue allongé. Nice.
Summer/1955. Oil, charcoal & pasted
paper on canvas. 80 x 190 cm. Musée
Picasso, Paris. Jacqueline Roque Picasso
Collection. Dation 1990.

OPP.55:012; MPP:1990.27; PP.55:141;
GR.90*:24; HP.66:43p; PD.06*:101p;
QP.64:67p; TO.04:63p; WW.91:525p





Femme nue allongée. Nice. Summer/1955. Oil on canvas. 80 x 190 cm. Catherine Hutin-Blay Collection, Paris. Formerly Jacqueline Roque Picasso Collection.

OPP.55:013; PP.55:142; HP.66:43p; WW.91:525p

Scène de tauromachie (Le torero soulevé). Nice. Summer/1955. Oil on canvas. 79,5 x 190,4 cm. Catherine Hutin-Blay Collection, Paris. Formerly Jacqueline Roque Picasso Collection.

OPP.55:015; PP.55:144; HP.66:48p; JF.96:168-169p; MA.86*:33; MM.85a*:42; PD.19*:110; PT.05*:52; WW.91:522p





Centaure. Nice. [Summer]/1955. Painted wood. 228,6 x 200,6 x 73,6 cm. Los Angeles County Museum of Art. (Inv M.85.318). Gift of Gloria & David L. Wolper.

OPP.55:258

Les femmes d'Alger (d'après Delacroix) (Étude) avec annotations manuscrites de couleurs. Nice. [Summer]/1955. India ink & blue pencil on glassine paper. 39,3 x 38 cm. Musée Picasso, Paris. Dation 1979.

OPP.55:259; MPP:1502; PP.55:137b





Corrida. Cannes. [Summer]/1955. Color ink on transparent paper. 55 x 73 cm. Musée Picasso, Paris. Don des héritiers Picasso en 1983.

OPP.55:265; MPP:1983.29; PP.55:111;
HP.66:53p; PA.20j:41p

Corrida. Cannes. Summer/1955. Color ink on transparent paper. 55 x 73 cm. Musée Picasso, Paris. Don des héritiers Picasso en 1983.

OPP.55:281; MPP:1983.28; PP.55:110;
HD.01:62; HP.66:55p; MF.10:166p





Le peintre et son modèle. Cannes. Summer/1955. Ink on transparent paper. 55 x 73 cm. Musée Picasso, Paris. Don des héritiers Picasso en 1983.

OPP.55:357; MPP:1983.44; PP.55:126;
MF.10:165p; MI.24*:n/a

La chèvre. Cannes. Summer/1955. Ink on transparent paper. 55 x 73 cm. Musée Picasso, Paris. Don des héritiers Picasso en 1983.

OPP.55:358; MPP:1983.15; PP.55:096;
MF.10:170p





À l'Atelier. Cannes. Summer/1955. Color ink on transparent paper. 55 x 73 cm. Musée Picasso, Paris. Don des héritiers Picasso en 1983.

OPP.55:359; MPP:1983.12; PP.55:093;
HP.66:35p

Femme endormie. Cannes. Summer/1955. Color ink on transparent paper. 55 x 73 cm. Musée Picasso, Paris. Don des héritiers Picasso en 1983.

OPP.55:360; MPP:1983.43; PP.55:125





Corrida. Cannes. Summer/1955. Color ink on transparent paper. 55 x 73 cm. Musée Picasso, Paris. Don des héritiers Picasso en 1983.

OPP.55:361; MPP:1983.10; PP.55:091; GP.96:325p; HP.66:54p

Corrida. Cannes. Summer/1955. Color ink on transparent paper. 55 x 73 cm. Musée Picasso, Paris. Don des héritiers Picasso en 1983.

OPP.55:362; MPP:1983.39; PP.55:121





Le peintre et son modèle. Cannes.
Summer/1955. Ink on transparent paper. 55 x 73
cm. Musée Picasso, Paris. Don des héritiers Picasso
en 1983.

OPP.55:363; MPP:1983.14; PP.55:095;
HP.66:41p

Trois personnages et cheval. Cannes.
Summer/1955. Ink on transparent paper.
55 x 73 cm. Musée Picasso, Paris. Don des
héritiers Picasso en 1983.

OPP.55:364; MPP:1983.26; PP.55:108;
HP.66:39p





Tête de faune. Cannes. Summer/1955. Felt-tip pen on blank vellum newsprint mounted on stretcher. [55 x 73] 56,3 x 75 cm. Musée Picasso, Paris. Don des héritiers Picasso en 1983.

OPP.55:365; MPP:1983.42; PP.55:124;
BF.14:108p; HP.66:18p; QP.64:79p

Personnages. Cannes. Summer/1955.
Color ink on transparent paper. 55 x 73 cm.
Musée Picasso, Paris. Don des héritiers
Picasso en 1983.

OPP.55:366; MPP:1983.19; PP.55:100;
HP.66:51p





Nature morte. Cannes. Summer/1955. Color ink on transparent paper. 55 x 73 cm. Musée Picasso, Paris. Don des héritiers Picasso en 1983.

OPP.55:367; MPP:1983.20; PP.55:101;
HP.66:30p

Nature morte. Cannes. Summer/1955.
Color ink on transparent paper. 55 x 73 cm.
Musée Picasso, Paris. Don des héritiers
Picasso en 1983.

OPP.55:368; MPP:1983.24; PP.55:105;
MF.10:169p





Personnages. Cannes. Summer/1955. Ink on transparent paper. 55 x 73 cm. Musée Picasso, Paris.

OPP.55:369; MPP:1983.09; PP.55:090;
HP.66:34p

La chèvre. Cannes. Summer/1955. Color ink on transparent paper. 55 x 73 cm. Musée Picasso, Paris. Don des héritiers Picasso en 1983.

OPP.55:370; MPP:1983.34; PP.55:116;
HP.66:28p; QP.64:181p





La plage à la Garoupe. Cannes. Summer/1955.
Oil on canvas. 80 x 190 cm. Private collection.

OPP.55:371

Coq. Nice. Summer/1955. Ink on
transparent paper. 55 x 73 cm. Musée
Picasso, Paris. Don des héritiers Picasso en
1983.

OPP.55:379; MPP:1983.18; PP.55:099;
HP.66:4p





La dormeuse. Nice. Summer/1955. Ink on transparent paper. 55 x 73 cm. Musée Picasso, Paris. Don des héritiers Picasso en 1983.

OPP.55:380; MPP:1983.31; PP.55:113; HP.66:20p

Scène de plage. Nice. Summer/1955. Ink on transparent paper. 55 x 73 cm. Musée Picasso, Paris. Don des héritiers Picasso en 1983.

OPP.55:381; MPP:1983.21; PP.55:102; HP.66:25p





Le roi et son bouffon. Nice. Summer/1955. Ink on transparent paper. 55 x 73 cm. Musée Picasso, Paris. Don des héritiers Picasso en 1983.

OPP.55:382; MPP:1983.41; PP.55:123; HP.66:27p

La Célestine. Nice. Summer/1955. Color ink on transparent paper. 55 x 73 cm. Musée Picasso, Paris. Don des héritiers Picasso en 1983.

OPP.55:383; MPP:1983.33v; PP.55:115; HP.66:29p





Paysage. Nice. Summer/1955. Colo ink on transparent paper. 55 x 73 cm. Musée Picasso, Paris.

OPP.55:384; MPP:1983.08; PP.55:089; HP.66:31p

À l'atelier. Nice. Summer/1955. Ink on transparent paper. 55 x 73 cm. Musée Picasso, Paris. Don des héritiers Picasso en 1983.

OPP.55:385; MPP:1983.36; PP.55:118; HP.66:33p





Couple. Nice. Summer/1955. Color ink on transparent paper. 55 x 73 cm. Musée Picasso, Paris. Don des héritiers Picasso en 1983.

OPP.55:386; MPP:1983.11; PP.55:092;
HP.66:37p

Études de visages. Nice. Summer/1955.
Ink on transparent paper. 55 x 73 cm.
Musée Picasso, Paris. Don des héritiers
Picasso en 1983.

OPP.55:387; MPP:1983.30; PP.55:112;
HP.66:32p





La mariée. Nice. Summer/1955. Ink on transparent paper. 55 x 73 cm. Musée Picasso, Paris.

OPP.55:388; MPP:1983.13r; PP.55:094; HP.66:36p

La plage à la Garoupe I. Nice. Summer/1955. Oil on canvas [Earlier version of *La plage à la Garoupe I*]. 80 x 190 cm. The National Museum of Western Art, Tokyo.

OPP.55:390; IC.05:134p





Musicien, nymphe à la chèvre et dansuse au tambourin. Nice. Summer/1955. Ink on transparent paper. 377 x 197 cm. Private collection.

OPP.55:403; DC.87:402; FS.82:116p

Danseuse et faunes musiciens. Nice. Summer/1955. Color ink & pastel on transparent paper. 55 x 73 cm. Musée Picasso, Paris. Don des héritiers Picasso en 1983.

OPP.55:437; MPP:1983.22; PP.55:103





Profil féminin et scène de plage. Nice. Summer/1955. Color ink on transparent paper. 55 x 73 cm. Musée Picasso, Paris. Don des héritiers Picasso en 1983.

OPP.55:438; MPP:1983.23; PP.55:104

Danse sur la plage. Nice. Summer/1955. Color pencils, color ink & India ink on transparent paper. 55 x 73 cm. Musée Picasso, Paris. Don des héritiers Picasso en 1983.

OPP.55:439; MPP:1983.25r; PP.55:106



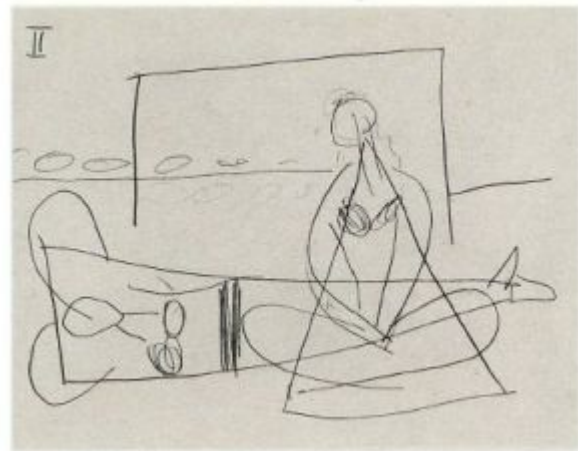


La plage I. Nice. [Summer]/1955. Graphite on paper. 21 x 27 cm. Private collection.

OPP.55:448; PP.55:128; Z.XVI:417

La plage II. Nice. [Summer]/1955. Graphite on paper. 21 x 27 cm. Private collection.

OPP.55:449; PP.55:129; Z.XVI:418



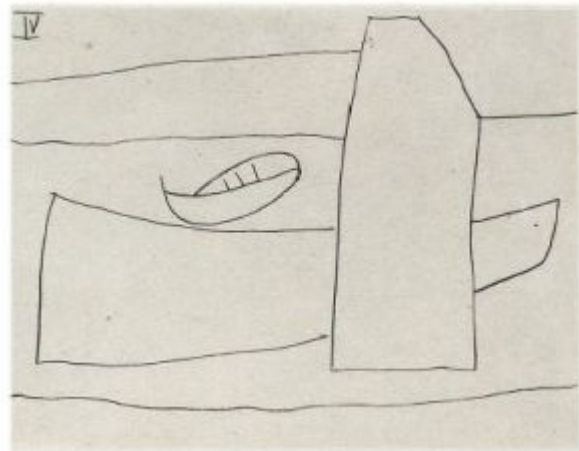


La plage III. Nice. [Summer]/1955. Graphite on paper. 21 x 27 cm. Private collection.

OPP.55:450; PP.55:130; Z.XVI:419

La plage IV. Nice. [Summer]/1955. Graphite on paper. 21 x 27 cm. Private collection.

OPP.55:451; PP.55:131; Z.XVI:420





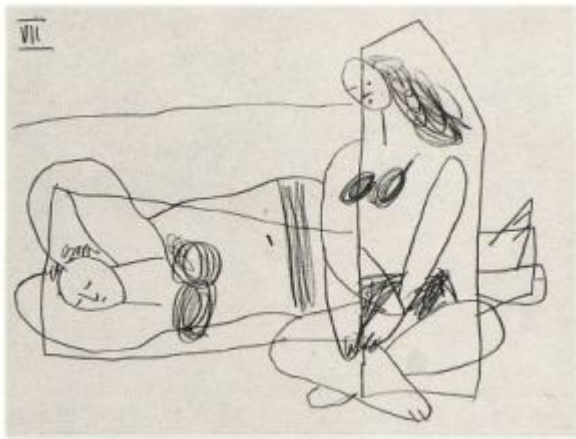
La plage V. Nice. [Summer]/1955. Graphite on paper. 21 x 27 cm. Private collection.

OPP.55:452; PP.55:133; Z.XVI:421

La plage VI. Nice. [Summer]/1955. Graphite on paper. 21 x 27 cm. Private collection.

OPP.55:453; PP.55:133; Z.XVI:422



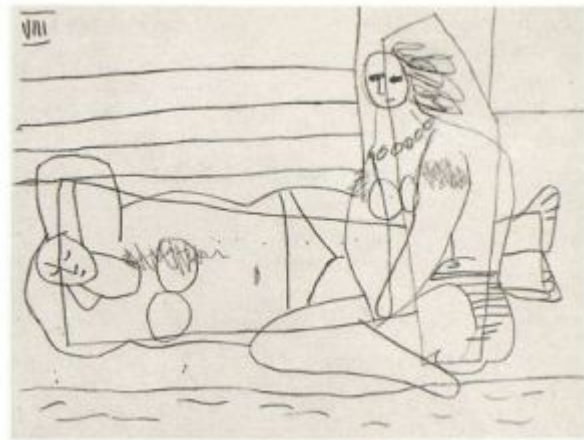


La plage VII. Nice. [Summer]/1955. Graphite on paper. 21 x 27 cm. Private collection.

OPP.55:454; PP.55:134; Z.XVI:423

La plage VIII. Nice. [Summer]/1955. Graphite on paper. 21 x 27 cm. Private collection.

OPP.55:455; PP.55:135; Z.XVI:424





La plage IX. Nice. [Summer]/1955. Graphite on paper. 21 x 27 cm. Private collection.

OPP.55:456; PP.55:136; Z.XVI:425

La plage X. Nice. [Summer]/1955. Graphite on paper. 21 x 27 cm. Private collection.

OPP.55:457; PP.55:137; Z.XVI:426





Scène de plage. Nice. Summer/1955. Black ink on paper. 54,9 x 74 cm. Musée Picasso, Paris. Don des héritiers Picasso en 1983.

OPP.55:530; MPP:1983.38; PP.55:120

Danse sur la plage. Nice. Summer/1955. India ink on paper. 57,8 x 75,8 cm. Musée Picasso, Paris. Don des héritiers Picasso en 1983.

OPP.55:531; MPP:1983.25v; PP.55:107





À l'atelier. Nice. Summer/1955. Felt-tip pen, black ink & newspaper on vellum paper. 57 x 74,6 cm. Musée Picasso, Paris. Don des héritiers Picasso en 1983.

OPP.55:532; MPP:1983.32; PP.55:114

Femme, faune et chèvre sur la plage de La Garoupe. Nice. Summer/1955. India ink on vellum paper. 57,4 x 76 cm. Musée Picasso, Paris. Don des héritiers Picasso en 1983.

OPP.55:533; MPP:1983.16r





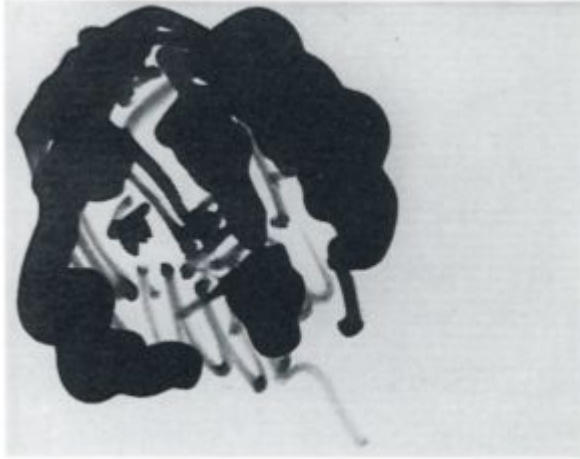
Femme, faune et chèvre sur la plage de La Garoupe. Nice. Summer/1955. India ink on vellum paper. 57,4 x 76 cm. Musée Picasso, Paris. Don des héritiers Picasso en 1983.

OPP.55:534; MPP:1983.16v; PP.55:097

Premier état du dessin Peintre et son modèle sur le tournage du film Le Mystère Picasso de Henri-Georges Clouzot. Nice. Summer/1955. Gelatin silver print. 18,2 x 24 cm. Musée Picasso, Paris. (Inv APPH10789).

OPP.55:549





Visage féminin. Nice. [Summer]/1955. Ink on transparent paper [OiC]. 55 x 73 cm. Musée Picasso, Paris.

OPP.55:550; MPP:1983.17; PP.55:098

Le soleil et le faune. Nice. Summer/1955. Colored inks on transparent paper [Oic]. 55 x 73 cm. Musée Picasso, Paris.

OPP.55:551; MPP:1983.27; PP.55:109





Tête de femme. Nice. Summer/1955. Colored inks on transparent paper [OïC]. 55 x 73 cm. Musée Picasso, Paris.

OPP.55:552; MPP:1983.35; PP.55:117

Deux têtes de faunes. Nice. Summer/1955. Colored inks on transparent paper [OïC]. 55 x 73 cm. Musée Picasso, Paris.

OPP.55:553; MPP:1983.37; PP.55:119





Tête de taureau. Nice. Summer/1955. Colored inks on transparent paper [OIC]. 55 x 73 cm. Musée Picasso, Paris.

OPP.55:554; MPP:1983.40; PP.55:122

Poisson. Nice. Summer/1955. Colored inks on transparent paper [OIC]. 55 x 73 cm. Musée Picasso, Paris.

OPP.55:555; MPP:1983.45; PP.55:127



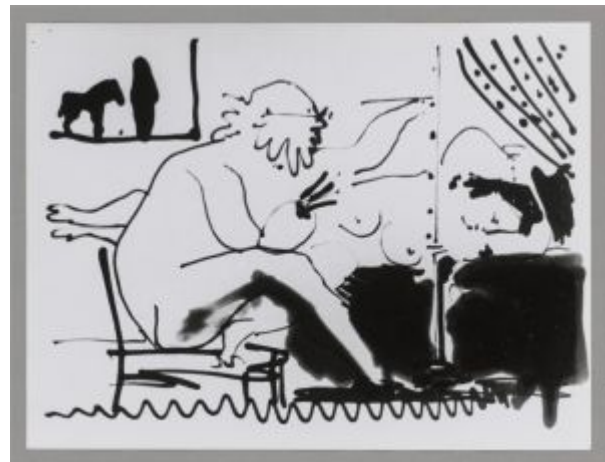


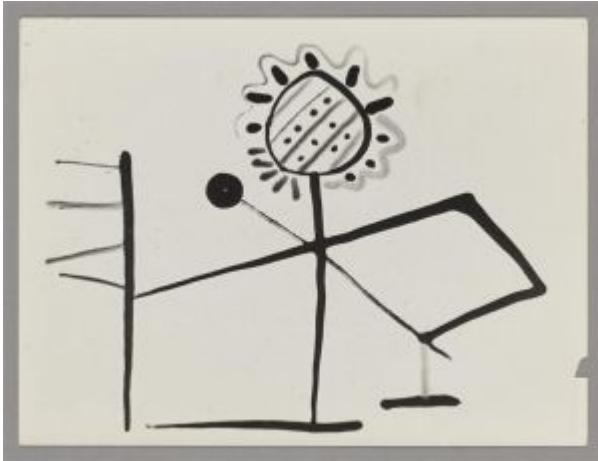
Troisième état du dessin Peintre et son modèle sur le tournage du film Le Mystère Picasso de Henri-Georges Clouzot. Nice. Summer/1955. Gelatin silver print. 18,2 x 24 cm. Musée Picasso, Paris. (Inv APPH10790).

OPP.55:565

Deuxième état du dessin Peintre et son modèle sur le tournage du film Le Mystère Picasso de Henri-Georges Clouzot. Nice. Summer/1955. Gelatin silver print. 18,2 x 24 cm. Musée Picasso, Paris. (Inv APPH10788).

OPP.55:566





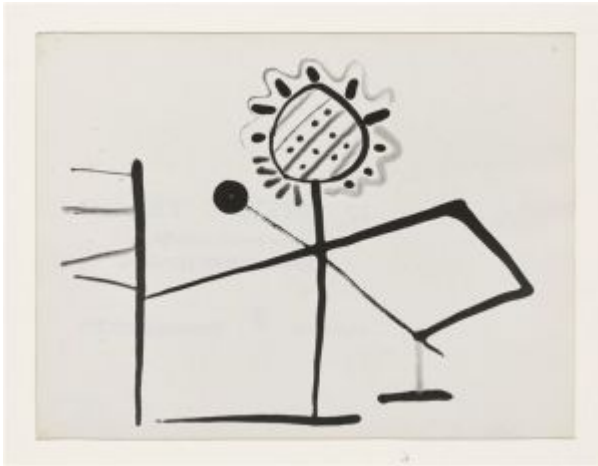
Premier état du dessin Profil féminin et scène de plage sur le tournage du film Le Mystère Picasso de Henri-Georges Clouzot. Nice. Summer/1955. Gelatin silver print. 18,1 x 24,1 cm. Musée Picasso, Paris. (Inv APPH8874).

OPP.55:567

Deuxième état du dessin Profil féminin et scène de plage sur le tournage du film Le Mystère Picasso de Henri-Georges Clouzot. Nice. Summer/1955. Gelatin silver print. 18,2 x 24 cm. Musée Picasso, Paris. (Inv APPH8875).

OPP.55:568





Premier état du dessin Profil féminin et scène de plage sur le tournage du film Le Mystère Picasso de Henri-Georges Clouzot. Nice. Summer/1955. Gelatin silver print. 18,1 x 24,1 cm. Musée Picasso, Paris. (Inv APPH8879).

OPP.55:569

Deuxième état du dessin Profil féminin et scène de plage sur le tournage du film Le Mystère Picasso de Henri-Georges Clouzot. Nice. Summer/1955. Gelatin silver print. 18,2 x 24 cm. Musée Picasso, Paris. (Inv APPH8880).

OPP.55:570





Troisième état du dessin Profil féminin et scène de plage sur le tournage du film *Le Mystère Picasso* de Henri-Georges Clouzot. Nice. Summer/1955. Gelatin silver print. 18,3 x 24,1 cm. Musée Picasso, Paris. (Inv APPH8881).

OPP.55:571

Troisième état du dessin Profil féminin et scène de plage sur le tournage du film *Le Mystère Picasso* de Henri-Georges Clouzot. Nice. Summer/1955. Gelatin silver print. 18,3 x 24 cm. Musée Picasso, Paris. (Inv FPPH260).

OPP.55:572





Portrait de l'artiste en torero (Para Minuni).
Golfe-Juan. [Summer]/1955. Ink on gelatin silver
print. 11,7 x 16,5 cm. Heritage Auctions.

OPP.55:584

Tête de faune. Cannes. 22-June/1955. Ink on paper.
28 x 22,5 cm. Artcurial. #397, 2000, 101/3/11.
Formerly Artcurial. #431, 1765, 11/03/09; Sotheby's.
#127, N08520, 02/12/09.

OPP.55:247





Autoportrait. Cannes. 23-June/1955. India ink on cardboard. [39,7 x 31,8] 39,9 x 32 cm. Christie's. #27, 20772, 10/28/21. Formerly Galerie Hopkins-Custot. 2007; Christie's. #624, 6318, 06/29/00.

OPP.55:164; PA.04g*:n/a; PB.21:160; YP.13:130p

Visage de faune. Vallauris. 28-June/1955. Earthenware plate, partially glazed. 25,3 cm. Christie's. #129, 1035, 11/25/02.

OPP.55:047; AR:283; B.III:63; CE.04*:274; JM.07*:55





Tête de taureau. Cannes. 2-July/1955. Charcoal on cream paper [OïC]. 50,6 x 65 cm. Private collection.

OPP.55:445; PP.55:083; Z.XVI:402

Taureau. Cannes. 3-July/1955. Graphite & color pencil on paper [OïC]. 50 x 65 cm. Private collection.

OPP.55:446; PP.55:084; Z.XVI:403





Quatre femmes dans un paysage XIX. Cannes. 4-July/1955. India ink, color pencils & gouache on paper. 65 x 50,5 cm. Musée Picasso, Paris. Dation 1979.

OPP.55:263; MPP:1501; PP.55:085; Z.XVI:400; ND.01*:88; RD.00*:131; SD.05*:n/a

Tête de faune. Cannes. 6-July/1955. Ink on paper. 25 x 16 cm. Private collection, Barcelona. Formerly Sotheby's, #181, 02/24/95.

OPP.55:109; PP.55:137a; FC.00*:95; LG.82*:n/a





La faune et la nuit étoilée. [Nice] Cannes. [June~July] 9-July/1955. Oil on canvas. [92,7 x 73,7] [92 x 73] [93,7 x 73,7] 91,4 x 72,4 cm. The Metropolitan Museum of Art, NYC. (Inv 1970.305). Gift of Joseph H. Hazen, 1970.

OPP.55:257; PP.55:086; Z.XVI:396; GT.10*:90; JR.62*:7.19; JR.66b*:96; MI.01*:159; NP.08*:11; NY.58i*:99; PA.12b*:376p; PC.94*:24; RM.94:45p; RS.88:150p



Buste de femme. Cannes. 10-July/1955. Oil on canvas. 92 x 73 cm. Private collection.

OPP.55:280; PP.55:087; Z.XVI:401; GR.71:13; JB.65:15



Buste de femme II. Cannes. 10-July/1955. Oil on canvas [Oic]. 92 x 73 cm. Private collection.

OPP.55:447; PP.55:088; Z.XVI:404

Lettre manuscrite à Max Pellequer.

Vallauris. 12-July/1955. Ink on paper. S/U. Piasa. #45, 2142, 02/15/24. Formerly Max Pellequer Collection.

OPP.55:575





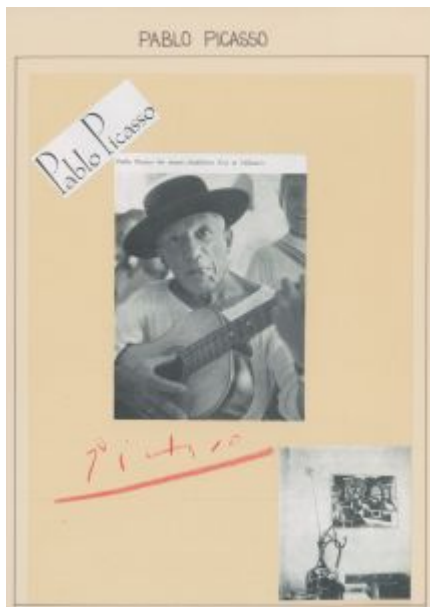
Guirlande aux dix drapeaux français. Cannes. 14-July/1955. Colored pencil on paper. 26 x 20,7 cm. Sotheby's. #310, PF2336, 04/12/23.

OPP.55:511; CR.75:1148

Dédicace (Para mi querido Minuni, su padre). Cannes. 22-July/1955. Vintage silver print. 40 x 30 cm. Private collection.

OPP.55:580





Signature. Vallauris. [End-Summer]/1955. Ink on photo album.
S/U. KOTTE Autographs GmbH, Rosshaupten.

OPP.55:582

Coupe circulaire creuse. Vallauris. 4-
August/1955. Terre de faïence, painted &
glazed. 5,9 cm. Espace Tajan. #18, 2121,
03/17/21.

OPP.55:527





Tête de faune. Cannes. 10-August/1955. Black ink on envelope. 11,3 x 14,4 cm. Zaidan Gallery. 2014. Formerly Artcurial. #423, 1765, 11/03/09.

OPP.55:254

Don Quichotte. Cannes. 10-August/1955. India ink on paper. S/U. Musée d'Art et d'Histoire Paul Éluard, Saint-Denis.

OPP.55:351; AC.06:44p





Don Quichotte. Cannes. Post-10-August/1955. Aquatint [After *Don Quichotte*]. 64,5 x 48 cm. Sotheby's. #127, PF2368, 06/30/23.

OPP.55:339; GC.96:266p; TH.75:193

Portrait de Héléna Rubinstein I. Nice. 15-August/1955. Pencil on paper. 27 x 21 cm. Private collection.

OPP.55:332; PP.55:146; Z.XVI:405; WR.96:20p





Portrait de Hélène Rubinstein II. Nice. 15-August/1955. Pencil on paper. 27 x 21 cm. Private collection.

OPP.55:333; PP.55:147; Z.XVI:406; WR.96:20p

Portrait de Hélène Rubinstein III. Nice. 15-August/1955. Pencil on paper. 27 x 21 cm. Private collection.

OPP.55:334; PP.55:148; Z.XVI:407; WR.96:21p





Portrait de Hélène Rubinstein IV. Nice. 15-August/1955.
Pencil on paper. 27 x 21 cm. Private collection.

OPP.55:335; PP.55:149; Z.XVI:408

Portrait de Hélène Rubinstein V. Nice. 15-
August/1955. Pencil on paper. 27 x 21 cm. Private
collection.

OPP.55:336; PP.55:150; Z.XVI:409; WR.96:21p





Portrait de Hélène Rubinstein VI. Nice. 15-August/1955.
Pencil on paper. 27 x 21 cm. Private collection.

OPP.55:337; PP.55:151; Z.XVI:410



Portrait de Hélène Rubinstein VII. Nice. 15-
August/1955. Pencil on paper. 27 x 21 cm. Private
collection.

OPP.55:338; PP.55:152; Z.XVI:411; WR.96:21p



Portrait d'Hélène Rubinstein (Étude) I. Nice. 16-August/1955. Lead pencil on paper. [43,5] 44 x 32 cm. Himeji City Museum of Art, Japan. Formerly Marina Picasso Collection. (Inv 10588-10611).

OPP.55:196; PP.55:153; Z.XVI:413; BA.03a*:253; GS.85*:118.II; WR.96:20p

Portrait d'Hélène Rubinstein (Étude) II. Cannes. 16-August/1955. Lead pencil on paper. [43,5] 44 x 32 cm. Himeji City Museum of Art, Japan. Formerly Marina Picasso Collection. (Inv 10588-10611).

OPP.55:197; PP.55:154; Z.XVI:412; BA.03a*:254; GS.85*:118.I; WR.96:20p





Portrait d'Hélène Rubinstein (Étude) V. Cannes. 16-August/1955. Pencil on paper. [43,5] 44 x 32 cm. Himeji City Museum of Art, Japan. Formerly Marina Picasso Collection. (Inv 10588-10611).

OPP.55:198; PP.55:157; Z.XVI:416; BA.03a*:255; GS.85*:118.V; WR.96:20p



Portrait d'Hélène Rubinstein (Étude) III. Cannes. 16-August/1955. [Conté] Black crayon. [44] 43,5 x 32 cm. Marina Picasso Collection. (Inv 10588-10611). Courtesy Galerie Jan Krugier, Geneva.

OPP.55:282; PP.55:156; Z.XVI:414; GS.85*:118



Portrait d'Hélène Rubinstein (Étude) IV. Cannes. 16-August/1955. [Conté] Black crayon. [44] 43,5 x 32 cm. Marina Picasso Collection. (Inv 10588-10611). Courtesy Galerie Jan Krugier, Geneva.

OPP.55:283; PP.55:155; Z.XVI:415; GS.85*:118

Don Quichotte. Cannes. 18~24-August/1955. Print (For the August 18-24 issue [No 581, p 12] of Les Lettres françaises in celebration of Don Quixote's 350th anniversary) [After *Don Quichotte*]. S/U. Gérard Gosselin Collection.

OPP.55:120; AN.00:240





Suzanne et les vieillards. Nice. 24-August/1955.
Oil on canvas. 80 x 192 cm. Museo Picasso,
Málaga. On temporary loan from Fundación Almine
& Bernard Ruiz-Picasso para el Arte.

OPP.55:014; PP.55:143; DP.20*:162; DQ.74:50-
51p; GA.00*:81; HP.66:42p; JC.01a*:207;
JL.13*:4; MG.04c*:24; WW.91:525p

Bacchanale. Cannes. September/1955.
Gouache, pastel & brush & black ink on
paper. [50,8 x 66] 50,5 x 65,6 cm.
Christie's. #174, 14185, 05/16/17.
Formerly Sotheby's. #156, N08676,
11/03/10.

OPP.55:422





Perls en Père Tanguy, Golfe-Juan. 4-September/1955. Pencil on paper. [12,7 x 8,8] 12,2 x 8,9 cm. The Museum of Modern Art, NYC. (Inv 159.1976). Formerly Frank Perls Collection.

OPP.55:301; PP.55:157a; DK.61*:108

Tête (Pour Jasmine Chasney), Golfe-Juan. 7-September/1955. Colored wax crayons on paper. 19 x 17,1 cm. Christie's. #546, 20181, 11/13/21.

OPP.55:529



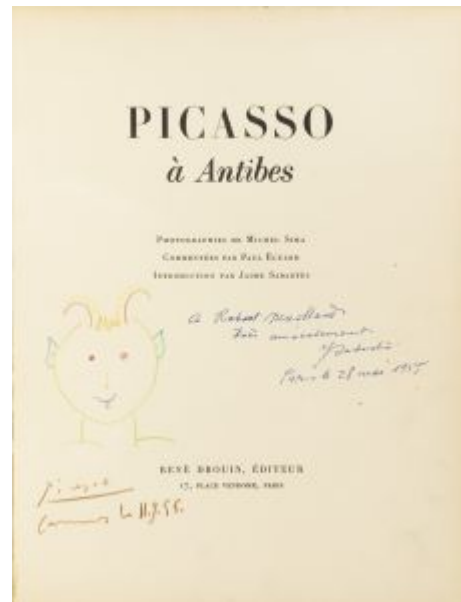


Lettre manuscrite à Max Pellequer. [Vallauris].
8-September/1955. Ink on paper. S/U. Piasa. #45,
2142, 02/15/24. Formerly Max Pellequer
Collection.

OPP.55:576

Tête de faune. Cannes. 11-September/1955. Color
crayon on paper. 25,5 x 33,5 cm. Sotheby's. #169,
PF1213, 11/19/12.

OPP.55:329





La danse III. Cannes. 15-September/1955. Ink & crayon. [48 x 61] 78,7 x 94 cm. DTR Modern Galleries. 2010. Formerly Gary Bruder, LLC. 2007.

OPP.55:204

Bacchanale. Cannes. 15-September/1955. India ink on paper. 48 x 63 cm. Christie's. 2021.

OPP.55:458; PP.55:158; Z.XVI:427





Bacchanale II. Cannes. 15-September/1955.
India ink on paper. 48 x 63 cm. Fundación Almine
& Bernard Ruiz-Picasso para el Arte.

OPP.55:459; PP.55:159; Z.XVI:428; PA.20j*:154

Lettre manuscrite à Max Pellequer.
[Vallauris]. 15-September/1955. Ink on
paper. S/U. Piasa. #45, 2142, 02/15/24.
Formerly Max Pellequer Collection.

OPP.55:577





Bacchanale avec enfant aux cymbales. Cannes. 17-September/1955. Etching, on green laid paper, edition 50. 26 x 30,5 cm. Museu Picasso, Barcelona. Also Christie's. #140, 2019, 07/31/08.

OPP.55:241; B.I:772; Ba:947; MPB:112.679; PD.19*:101; TO.04*:193

Homme nu avec femme ivre et jeune flûtiste. Cannes. 18-September/1955. Etching, edition 65. 25 x 30,8 cm. Museu Picasso, Barcelona. Also Meyerovich Gallery. 2005.

OPP.55:126; B.I:773; Ba:949; MPB:112.662; JM.07*:19; TO.04*:195





Homme nu assis avec femme nue sur les genoux. Cannes. 18-September/1955. Etching on Auvergne Richard de Bas paper, edition 50. [25,9 x 30,5] 25,7 x 30,8 cm. Christie's. #193, 3311, 12/07/11.

OPP.55:127; B.I:775; Ba:950

Couple nu dansant et jeune fille tenant un masque I. Cannes. 18-September/1955. Etching, edition 50. [25,7 x 30,8] 25,9 x 30,9 cm. Museu Picasso, Barcelona. Also Christie's. #109, 2361, 09/20/11.

OPP.55:305; B.I:774; Ba:948;
MPB:112.681; TO.04*:194





Pour Vladimir Pozner et Joris Ivens, Le chant des fleurs XV. Cannes. 19-September/1955. Colored crayons on paper. 27 x 21 cm. Sotheby's. #347, N08024, 11/05/04.

OPP.55:111; PP.55:172; Z.XVI:443

Pour Vladimir Pozner et Joris Ivens, Le chant des fleurs III. Cannes. 19-September/1955. India ink on paper. 27 x 21 cm. Private collection.

OPP.55:460; PP.55:160; Z.XVI:431





Pour Vladimir Pozner et Joris Ivens, Le chant des fleurs IV. Cannes. 19-September/1955. India ink & color pencil on paper [OIC]. 27 x 21 cm. Private collection.

OPP.55:461; PP.55:161; Z.XVI:432

Pour Vladimir Pozner et Joris Ivens, Le chant des fleurs V. Cannes. 19-September/1955. India ink & color pencil on paper [OIC]. 27 x 21 cm. Private collection.

OPP.55:462; PP.55:162; Z.XVI:433





Pour Vladimir Pozner et Joris Ivens, Le chant des fleurs VI. Cannes. 19-September/1955. India ink & color pencil on paper [OIC]. 27 x 21 cm. Private collection.

OPP.55:463; PP.55:163; Z.XVI:434

Pour Vladimir Pozner et Joris Ivens, Le chant des fleurs VII. Cannes. 19-September/1955. Blue ink & color pencil [OIC]. 27 x 21 cm. Private collection.

OPP.55:464; PP.55:164; Z.XVI:435





Pour Vladimir Pozner et Joris Ivens, Le chant des fleurs VIII. Cannes. 19-September/1955. India ink & color pencil on paper [OIC]. 27 x 21 cm. Private collection.

OPP.55:465; PP.55:165; Z.XVI:436



Pour Vladimir Pozner et Joris Ivens, Le chant des fleurs IX. Cannes. 19-September/1955. India ink & color pencil on paper [OIC]. 27 x 21 cm. Private collection.

OPP.55:466; PP.55:166; Z.XVI:437



Pour Vladimir Pozner et Joris Ivens, Le chant des fleurs X. Cannes. 19-September/1955. India ink & color pencil on paper [OIC]. 27 x 21 cm. Private collection.

OPP.55:467; PP.55:167; Z.XVI:438

Pour Vladimir Pozner et Joris Ivens, Le chant des fleurs XI. Cannes. 19-September/1955. India ink & color pencil on paper [OIC]. 27 x 21 cm. Private collection.

OPP.55:468; PP.55:168; Z.XVI:439





Pour Vladimir Pozner et Joris Ivens, Le chant des fleurs XII. Cannes. 19-September/1955. India ink & color pencil on paper [OïC]. 27 x 21 cm. Private collection.

OPP.55:469; PP.55:169; Z.XVI:440



Pour Vladimir Pozner et Joris Ivens, Le chant des fleurs XIII. Cannes. 19-September/1955. India ink & color pencil on paper [OïC]. 27 x 21 cm. Private collection.

OPP.55:470; PP.55:170; Z.XVI:441



Pour Vladimir Pozner et Joris Ivens, Le chant des fleurs XIV. Cannes. 19-September/1955. India ink & color pencil on paper [OIC]. 27 x 21 cm. Private collection.

OPP.55:471; PP.55:171; Z.XVI:442

Pour Vladimir Pozner et Joris Ivens, Le chant des fleurs XVI. Cannes. 19-September/1955. Color pencils on paper [OIC]. 24 x 21 cm. Private collection.

OPP.55:472; PP.55:173; Z.XVI:444





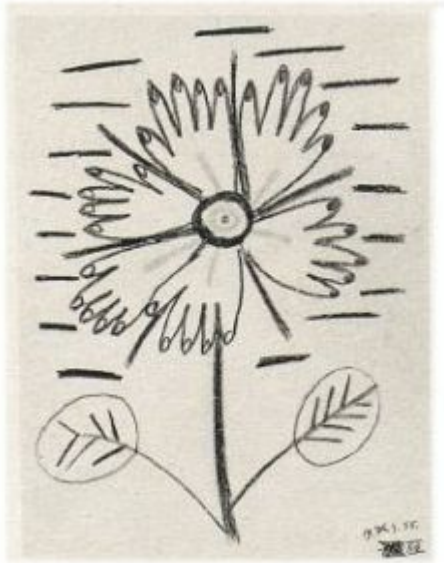
Pour Vladimir Pozner et Joris Ivens, Le chant des fleurs XVII. Cannes. 19-September/1955. Color pencils on paper [OïC]. 65 x 50 cm. Private collection.

OPP.55:473; PP.55:174; Z.XVI:445

Pour Vladimir Pozner et Joris Ivens, Le chant des fleurs XVIII. Cannes. 19-September/1955. Color pencils on paper [OïC]. 33 x 25,5 cm. Private collection.

OPP.55:474; PP.55:175; Z.XVI:446





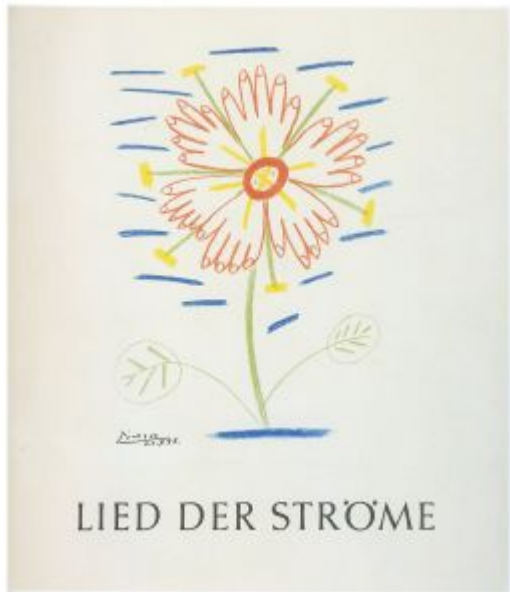
Pour Vladimir Pozner et Joris Ivens, Le chant des fleurs XIX. Cannes. 19-September/1955. Color pencils on paper [OïC]. 33 x 25,5 cm. Private collection.

OPP.55:475; PP.55:176; Z.XVI:447

Pour Vladimir Pozner et Joris Ivens, Le chant des fleurs XX. Cannes. 19-September/1955. Color pencils on paper [OïC]. 27 x 21 cm. Private collection.

OPP.55:476; PP.55:177; Z.XVI:448





Fleur (Joris Ivens & Vladimir Pozner, Lied der Ström). Cannes. 20-September/1955. Print on bookcover, published in 1957. 29,2 x 25,5 cm. Nationalgalerie, Kupferstichkabinett, Staatliche Museen zu Berlin.

OPP.55:319; PF.10*:76

Bacchanale II. Cannes. 22-September/1955. Ink & crayons. 50 x 65 cm. Eleanore and Daniel Saidenberg Collection, NY.

OPP.55:300; PP.55:178; Z.XVI:429; JR.62*:8.46





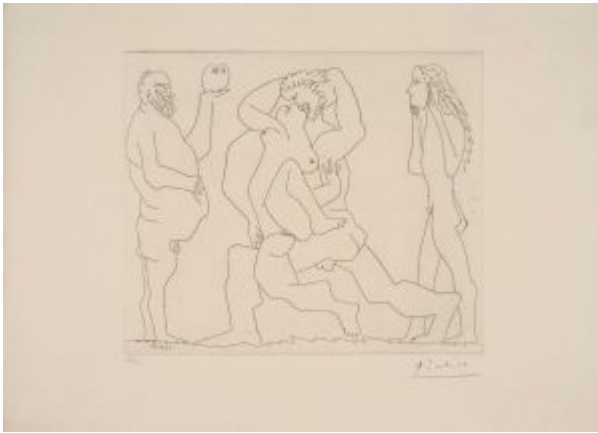
Bacchanale II. Cannes. [22~] 23-September/1955. India ink & gouache on paper. 51,2 x 66 cm. Musée Picasso, Paris. Jacqueline Roque Picasso Collection. Dation 1990.

OPP.55:145; MPP:1990.92; PP.55:179; Z.XVI:430; CK.04*:113; GL.81*:39; GR.90*:89; JC.01a*:208; MA.08a*:n/a; PD.06*:100p; PD.19:40p; PD.69:64p; RB.99:96p; UP.00:1012; WS.93*:109; WW.91:536p

Scène bucolique avec Amour en haut à gauche. Cannes. 22~23-September/1955. Drypoint & etching. [25,5 x 30] 25,6 x 30,9 cm. Museu Picasso, Barcelona. Also Sotheby's. #25, N09217, 11/03/14.

OPP.55:341; B.I:776; Ba:951; MPB:12.663





Bacchanale au hibou et au jeune homme masqué. Cannes. 23-September/1955. Etching on Arches. [25,7 x 30,6] 26,8 x 31 cm. Museu Picasso, Barcelona. Also Sotheby's. #400, PF6025, 10/11/06.

OPP.55:159; B.I:777; Ba:952; MPB:112.675; TO.04*:197

Homme et femme nus. Cannes. 23-September/1955. India ink wash on paper. 25 x 23.5 cm. Private collection.

OPP.55:266; PP.55:180; Z.XVI:449; HN.00*:78; JC.01a*:209





Homme et femme nus II. Cannes. 23-September/1955. Brush & ink & wash on paper. [25,2 x 33] 25,2 x 32,9 cm. Sotheby's. #87, L20010, 06/18/20. Formerly Christie's. #149, 15930, 06/21/18; Christie's. #70, 15723, 03/22/18.

OPP.55:441; PP.55:181; Z.XVI:450

Homme et femme IV. Cannes. 23-September/1955. Wash. 25 x 32,5 cm. Private collection.

OPP.55:477; PP.55:182; Z.XVI:451





Jacqueline en Espagnole. Cannes. 2-October/1955. India ink on paper. 65 x 50 cm. Private collection.

OPP.55:496; PP.55:183; Z.XVI:478; LE.21:419p

Jacqueline en Lola de Valence IV (d'après Manet). Cannes. 4-October/1955. India ink on paper. 32 x 24 cm. Catherine Hutin-Blay Collection, Paris. Formerly Jacqueline Roque Picasso Collection.

OPP.55:028; PP.55:187; Z.XVI:479; GB.87:244; LE.21:419p; TH.75:206; VO.16:143p; WR.80*:432p; WR.96:458p





Homme et femme nus III. Cannes. 4-October/1955. India ink. 32,5 x 25 cm. Private collection.

OPP.55:098; PP.55:186; Z.XVI:455



Homme et femme nus II. Cannes. 4-October/1955. India ink. 32,5 x 25 cm. Private collection.

OPP.55:129; PP.55:185; Z.XVI:454



Homme et femme I. Cannes. 4-October/1955. India ink on paper. 32,5 x 25 cm. Private collection.

OPP.55:479; PP.55:184; Z.XVI:453

Lettre manuscrite à Max Pellequer.

[Vallauris]. 5-October/1955. Ink on paper.
S/U. Piasa. #45, 2142, 02/15/24. Formerly
Max Pellequer Collection.

OPP.55:578





Jacqueline en Lola de Valence IV (d'après Manet).

Cannes. 6-October/1955. Colored crayons on paper. 31 x 24,2 cm. Private collection.

OPP.55:249; EC.16*:162; LE.21*:386; PD.19*:27;
PJ.14*:69p



Clouzot fumant I. Cannes. 8-October/1955. India ink.
32,5 x 25 cm. Private collection.

OPP.55:017; PP.55:188; Z.XVI:456; DC.87:408



Homme portant une femme II. Cannes. 8-October/1955. India ink. 32,5 x 25 cm. Private collection.

OPP.55:042; PP.55:189; Z.XVI:457

Homme portant une femme et homme aux cymbales III. Cannes. 8-October/1955. India ink. 32,5 x 25 cm. Private collection.

OPP.55:142; PP.55:190; Z.XVI:458





Homme portant une femme IV. Cannes. 8-October/1955.
India ink. 32,5 x 25 cm. Private collection.

OPP.55:143; PP.55:191; Z.XVI:459

Bacchanale (Pour Zette). Cannes. 10-October/1955. Black ink on vellum Arches paper. 33 x 50,5 cm. Musée National d'Art Moderne, Centre Georges Pompidou, Paris. (Inv AM.1984.650). Donation Louise et Michel Leiris, 1984.

OPP.55:138; PP.55:192; Z.XVI:460;
DU.95*:98p; JM.07*:23; PA.20j*:153





Portrait de Jacqueline. Cannes. 12-October/1955. Oil & charcoal on canvas. [69 x 55] 73 x 55 cm. Catherine Hutin-Blay Collection, Paris. Formerly Jacqueline Roque Picasso Collection.

OPP.55:007; PP.55:192a; DD.61:186p; PD.19*:56

Tête. Cannes. 13-October/1955. Oil on canvas. 73,2 x 55,2 cm. Sotheby's. #182, N09568, 11/15/16.

OPP.55:414; OY.90*:16





Personnages I. Cannes. 13-October/1955. India ink on paper.
32 x 24 cm. Private collection.

OPP.55:480; PP.55:193; Z.XVI:461



Personnages II. Cannes. 13-October/1955. India ink on paper.
32 x 24 cm. Private collection.

OPP.55:481; PP.55:194; Z.XVI:462



Personnages III. Cannes. 13-October/1955. India ink on paper. 32 x 24 cm. Private collection.

OPP.55:482; PP.55:195; Z.XVI:463



Personnages IV. Cannes. 13-October/1955. India ink on paper. 32 x 24 cm. Private collection.

OPP.55:483; PP.55:196; Z.XVI:464



Personnages V. Cannes. 13-October/1955. India ink on paper.
32 x 24 cm. Private collection.

OPP.55:484; PP.55:197; Z.XVI:465



Personnages VI. Cannes. 13-October/1955. India ink on paper. 32 x 24 cm. Private collection.

OPP.55:485; PP.55:198; Z.XVI:466



Personnages VII. Cannes. 13-October/1955. India ink on paper. 32 x 24 cm. Private collection.

OPP.55:486; PP.55:199; Z.XVI:467



Personnages VIII. Cannes. 13-October/1955. India ink on paper. 32 x 24 cm. Private collection.

OPP.55:487; PP.55:200; Z.XVI:468



Personnages IX. Cannes. 13-October/1955. India ink on paper. 32 x 24 cm. Private collection.

OPP.55:488; PP.55:201; Z.XVI:469



Personnages X. Cannes. 13-October/1955. India ink on paper. 32 x 24 cm. Private collection.

OPP.55:489; PP.55:202; Z.XVI:470



Personnages XI. Cannes. 13-October/1955. India ink on paper. 32 x 24 cm. Private collection.

OPP.55:490; PP.55:203; Z.XVI:471

Nu aux bras levés. Cannes. 15-October/1955. Oil on canvas. 73,1 x 55,3 cm. Takeshi Yamashita Collection. Formerly Christie's. #36, 2782, 05/08/13; Max Lang Gallery, NY. 2007.

OPP.55:128; GB.14*:78





Arbres III. Cannes. 15-October/1955. Graphite & red crayon on paper [OïC]. 32 x 24 cm. Private collection.

OPP.55:491; PP.55:206; Z.XVI:472



Arbres IV. Cannes. 15-October/1955. Graphite & red crayon on paper [OïC]. 32 x 24 cm. Private collection.

OPP.55:492; PP.55:207; Z.XVI:473



Deux arbres II. Cannes. 15-October/1955. India ink & red crayon on paper [Oic]. 32 x 24 cm. Private collection.

OPP.55:493; PP.55:205; Z.XVI:474

Arbres I. Cannes. 15-October/1955. India ink & red crayon on paper. 32 x 24 cm. Private collection.

OPP.55:494; PP.55:204; Z.XVI:476





Personnages. Cannes. 15-October/1955. Oil on canvas [OïC]. 80 x 190,5 cm. Private collection.

OPP.55:556; PP.55:203a; DD.61:247p

Composition. Cannes. 19-October/1955. Conté crayon on paper. 21 x 27 cm. Private collection.

OPP.55:478; PP.55:208; Z.XVI:452





Jardin. Cannes. 19-October/1955. Wash. 32 x 24 cm. Private collection.

OPP.55:495; PP.55:209; Z.XVI:477

Portrait de Jacqueline. Cannes. 21-October/1955. India ink & charcoal on paper. [65 x 50] 66 x 51,2 cm. Catherine Hutin-Blay Collection, Paris. Formerly Jacqueline Roque Picasso Collection.

OPP.55:246; PP.55:210; Z.XVI:485; JL.67b:92p; JL.71:271p; PD.19*:11; PJ.14*:49p; WR.80*:422p; WR.96:16p; WW.91:513p



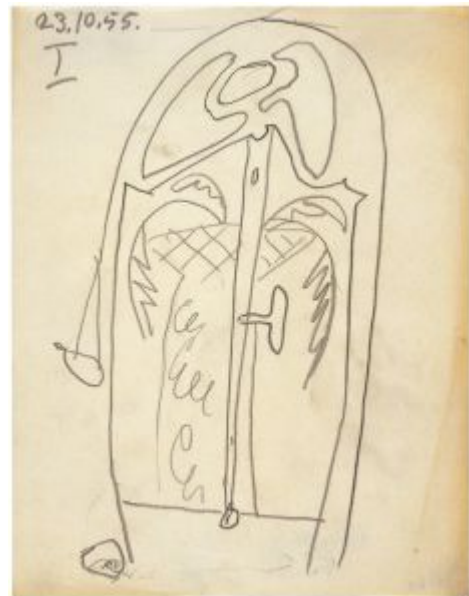


L'atelier à La Californie. Cannes. 23-October/1955. Oil on canvas. 116 x 89 cm. Musée National d'Art Moderne, Centre Georges Pompidou, Paris. (Inv AM.1984.636). Donation Louise et Michel Leiris, 1984.

OPP.55:141; PP.55:211; Z.XVI:486; BA.22:226p; DU.95:23p; GL.57*:1; GP.96:326p; MF.10*:123p; MP.02*:156; PD.19:20p; PE.01a*:15; RM.07*:107p; TO.04:65p; TO.99*:108; WS.93*:125; YB.99*:228

La Californie: Une fenêtre I. Cannes. 23-October/1955. Pencil on paper. 27 x 21. Museo Picasso, Málaga. Bernard Ruiz-Picasso Collection. Courtesy Fundación Almine & Bernard Ruiz-Picasso para el Arte.

OPP.55:148; MPM:1.51; GS.03:1.88; NC.17*:134



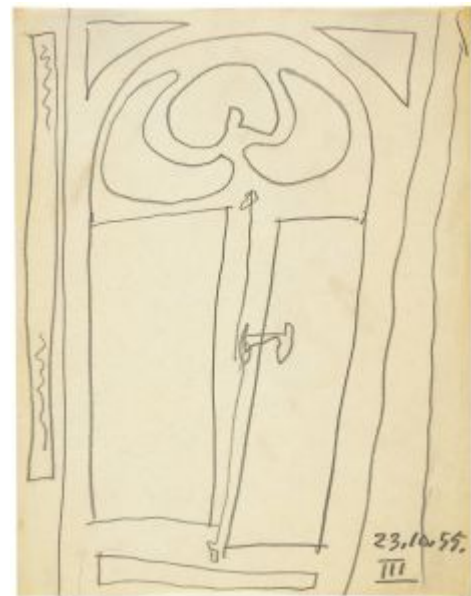


La Californie: Une fenêtre II. Cannes. 23-October/1955. Pencil on paper. 27 x 21 cm. Museo Picasso, Málaga. Bernard Ruiz-Picasso Collection. Courtesy Fundación Almine & Bernard Ruiz-Picasso para el Arte.

OPP.55:149; MPM:1.52; GS.03:1.89; NC.17*:135

La Californie: Une Fenêtre. Cannes. 23-October/1955. Pencil on paper. 27 x 21 cm. Museo Picasso, Málaga. Bernard Ruiz-Picasso Collection. Courtesy Fundación Almine & Bernard Ruiz-Picasso para el Arte.

OPP.55:150; MPM:1.53A; GS.03:90





L'atelier de La Californie II. Cannes. 23-October/1955. Oil on canvas. 116 x 89 cm. Museum Sammlung Rosengart, Luzern. Siegfried & Angela Rosengart Collection.

OPP.55:244; PP.55:212; Z.XVI:487; GL.57*:2; GR.71:14; KG.71:139; KG.85:139; LC.57*:n/a; RP.60*:198; TG.88:25; UP.00:1025

La Californie: Une fenêtre. Cannes. 24-October/1955. Pencil on paper. 27 x 21 cm. Museo Picasso, Málaga. Bernard Ruiz-Picasso Collection. Courtesy Fundación Almine & Bernard Ruiz-Picasso para el Arte.

OPP.55:151; MPM:1.54A; GS.03:91





L'atelier de La Californie. Cannes. 24-October/1955. Oil on canvas. [193,7 x 80] 189,8 x 79,7 cm. Christie's. #28B, 12145, 11/16/16. Formerly Nagashima Museum, Kagoshima, Japan; Saitenberg Gallery, NY.

OPP.55:299; PP.55:213; Z.XVI:488; BS.81*:46; EG.66*:37p; GL.57*:3; JR.62*:7.20; PA.78f*:n/a; PE.01a*:16; TI.71:62; VI.81*:58; WC.62*:73

La Californie: Intérieur et fenêtre. Cannes. 25-October/1955. Pencil on paper. 27 x 21 cm. Museo Picasso, Málaga. Bernard Ruiz-Picasso Collection. Courtesy Fundación Almine & Bernard Ruiz-Picasso para el Arte.

OPP.55:152; MPM:1.55A; GS.03:1.92; LW.15*:86p





La Californie: Intérieur et fenêtre. Cannes. 25-October/1955. Pencil on paper. 27 x 21 cm. Museo Picasso, Málaga. Bernard Ruiz-Picasso Collection. Courtesy Fundación Almine & Bernard Ruiz-Picasso para el Arte.

OPP.55:153; MPM:1.56A; GS.03:1.93

L'atelier de La Californie II. Cannes. 25-October/1955. Pencil on paper. 27 x 21 cm. Musée Picasso, Paris. Dation 1979.

OPP.55:264; MPP:1503; PP.55:213a





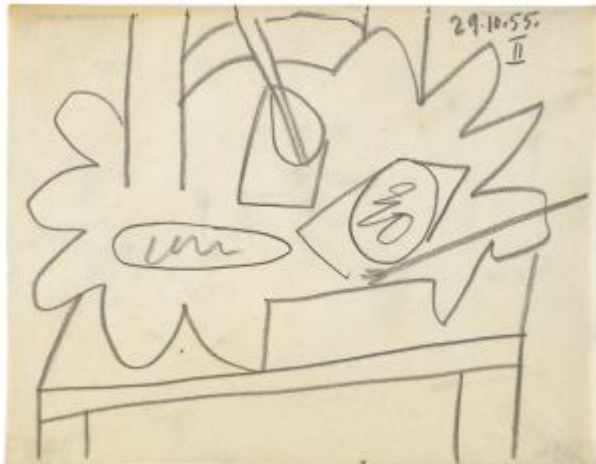
L'atelier de La Californie I. Cannes. 28-October./1955. Oil on canvas. 115,8 x 88,9 cm. Christie's. #4A, 15971, 05/15/18. Formerly Daros Collection, Switzerland.

OPP.55:268; PP.55:214; Z.XVI:490; GL.57*:4; HN.13:227p; KB.01*:148; NY.57c*:n/a; NY.71b*:73; PD.19:23p; PE.01a*:17; QP.64:123p; SY.02*:17; TO.99*:109; YB.99*:227

L'atelier de La Californie II. Cannes. 28-October/1955. Oil on canvas [Oic]. 73 x 54 cm. Private collection.

OPP.55:320; PP.55:215; Z.XVI:489; GL.57*:5





La Californie: Chaise et matériel de peinture. Cannes. 29-October/1955. Pencil on paper. 21 x 27 cm. Museo Picasso, Málaga. Bernard Ruiz-Picasso Collection. Courtesy Fundación Almine & Bernard Ruiz-Picasso para el Arte.

OPP.55:154; MPM:1.57A; GS.03:1.94

La Californie: Une fenêtre. Cannes. 29-October/1955. Pencil on paper. 27 x 21 cm. Museo Picasso, Málaga. Bernard Ruiz-Picasso Collection. Courtesy Fundación Almine & Bernard Ruiz-Picasso para el Arte.

OPP.55:155; MPM:1.58A; GS.03:1.95; LW.15*:86p





La Californie: Détail de fenêtre. Cannes. 29-October/1955. Pencil on paper. 27 x 21 cm. Museo Picasso, Málaga. Bernard Ruiz-Picasso Collection. Courtesy Fundación Almine & Bernard Ruiz-Picasso para el Arte.

OPP.55:156; MPM:1.59A; GS.03:96

L'atelier de La Californie. Cannes. 29-October/1955. Graphite on paper. 66 x 50,9 cm. Musée Picasso, Paris. Dation 1979.

OPP.55:243; MPP:1504; PP.55:215a; Z.XVI:475; JL.67b:95p; JL.71:174p; MA.08a*:n/a; MF.10:124p; MS.05*:n/a; PE.01a*:94; UP.00:1024





Un coin de l'atelier. Cannes. 29-October/1955. Pencil on paper. 27 x 21 cm. Musée Picasso, Paris. Dation 1979.

OPP.55:262; MPP:1505; PP.55:215b

L'atelier de La Californie I. Cannes. 29-October/1955. Oil on canvas. [73 x 54] 71,4 x 54,9 cm. Helly Nahmad Collection, Monaco/London.

OPP.55:321; PP.55:216; Z.XVI:492; GL.57*:6; HN.13*:235p





L'atelier de La Californie II. Cannes. 29-October/1955. Oil on canvas [OIC]. 81 x 65 cm. Private collection.

OPP.55:322; PP.55:217; Z.XVI:491; GL.57*:7

L'atelier I. Cannes. 30-October/1955. Oil on canvas. [81 x 65] 80,5 x 64,7 cm. Christie's. #0045, 7562, 02/04/08. Formerly Galerie Thomas. 2007; Helly Nahmad Gallery, London. 1999; Christie's. #L45, 06/27/94.

OPP.55:202; PP.55:217a; Z.XVI:495; BS.07b*:n/a; GE.73a*:37; GL.57*:8; LO.98b*:54; NY.06d*:n/a; PE.01a*:18; RT.89*:76; RT.99*:76





L'atelier de La Californie II. Cannes. 30-October/1955. Oil on canvas [OiC]. 100 x 81 cm. Private collection.

OPP.55:323; PP.55:217b; Z.XVI:494; GL.57*:9

L'atelier de La Californie III. Cannes. 30-October/1955. Oil on canvas [Oic]. 100 x 81 cm. Private collection.

OPP.55:325; PP.55:217c; Z.XVI:493; GL.57*:10





L'atelier de La Californie IV. Paris. 30~31-October/1955.
Oil on canvas. 80,9 x 64,9. Tate Modern, Liverpool. (Inv
T06802). Presented by Gustav & Elly Kahnweiler, 1974 &
accessioned, 1994.

OPP.55:121; PP.55:218; Z.XVI:497; BS.12*:121;
GB.87:286; GL.57*:11; HA.16*:n/a; JC.59:80p; JL.71:272p;
JR.10:26p; KS.62:48; MF.01*:38; MF.10:74p; PC.66:40p;
PF.10*:69; TO.14*:92

Femmes à la colombe I. Cannes. 31-October/1955.
Pencil. 27 x 21 cm. Private collection.

OPP.55:136; PP.55:219; Z.XVI:480





Femmes à la colombe VI. Cannes. 31-October/1955. India ink on paper. [27 x 21] 26,5 x 20,5 cm. Musée National d'Art Moderne, Centre Georges Pompidou, Paris. (Inv AM3765D). Don de Pierre Gaut, 1969 en souvenir de Marguerite Savary.

OPP.55:140; PP.55:223; Z.XVI:484; JR.09:246p; PF.10*:46



Femmes à la colombe II. Cannes. 31-October/1955. India ink on paper. 27 x 21 cm. Private collection.

OPP.55:497; PP.55:220; Z.XVI:481



Femmes à la colombe III. Cannes. 31-October/1955. India ink on paper. 27 x 21 cm. Private collection.

OPP.55:498; PP.55:221; Z.XVI:482



Femmes à la colombe IV. Cannes. 31-October/1955. India ink on paper. 27 x 21 cm. Private collection.

OPP.55:499; PP.55:222; Z.XVI:483



L'atelier de La Californie XIV. Cannes. 1-November/1955. Ink. 26,5 x 42 cm. Private collection. Le Carnet de La Californie.

OPP.55:166

L'atelier de La Californie XII. Cannes. 1-November/1955. Ink. 26,5 x 42 cm. Private collection. Le Carnet de La Californie.

OPP.55:167





L'atelier de La Californie IX. Cannes. 1-
November/1955. Pencil. 26,5 x 42 cm. Private
collection. Le Carnet de La Californie.

OPP.55:184

L'atelier de La Californie X. Cannes. 1-
November/1955. Pencil. 26,5 x 42 cm.
Private collection. Le Carnet de La
Californie.

OPP.55:185





L'atelier de La Californie XI. Cannes. 1-
November/1955. Pencil. 26,5 x 42 cm. Private
collection. Le Carnet de La Californie.

OPP.55:186

L'atelier de La Californie XII. Cannes. 1-
November/1955. Ink. 26,5 x 42 cm. Private
collection. Le Carnet de La Californie.

OPP.55:193





L'atelier de La Californie XIV. Cannes. 1-November/1955. Ink. 26,5 x 42 cm. Private collection. Le Carnet de La Californie.

OPP.55:194

L'atelier de La Californie VII. Cannes. 1-November/1955. India ink on paper. 21 x 27 cm. Musée Picasso, Paris. Dation 1979.

OPP.55:260; MPP:1512; PP.55:223g;
MS.05*:n/a; PA.79a*:577; PE.01a*:99





L'atelier de La Californie II. Cannes. 1-November/1955. India ink on paper. 21 x 27 cm. Musée Picasso, Paris. Dation 1979.

OPP.55:261; MPP:1507; PP.55:223b;
MS.05*:n/a; PA.79a*:572; PE.01a*:96



L'atelier de La Californie IV. Cannes. 1-November/1955. [Pencil] India ink. 21 x 27 cm. Musée Picasso, Paris. Dation 1979.

OPP.55:269; MPP:1509; PP.55:223d;
PA.79a*:574; TO.99*:110



L'atelier de La Californie VI. Cannes. 1-November/1955. India ink on paper. 21 x 27 cm. Musée Picasso, Paris. Dation 1979.

OPP.55:270; MPP:1511; PP.55:223f;
PA.79a*:576; PE.01a*:98; TO.99*:111

L'atelier de La Californie I. Cannes. 1-November/1955. India ink on paper. 21 x 27 cm. Musée Picasso, Paris. Dation 1979.

OPP.55:355; MPP:1506; PP.55:223a;
PA.79a*:571; PE.01a*:95





L'atelier de La Californie V. Cannes. 1-
November/1955. India ink on paper. 21 x 27 cm.
Musée Picasso, Paris. Dation 1979.

OPP.55:356; MPP:1510; PP.55:223e;
PA.79a*:575; PE.01a*:97

L'atelier de La Californie XIII. Cannes.
1-November/1955. Ink on paper. S/U.
Private collection.

OPP.55:373; HN.13:232p





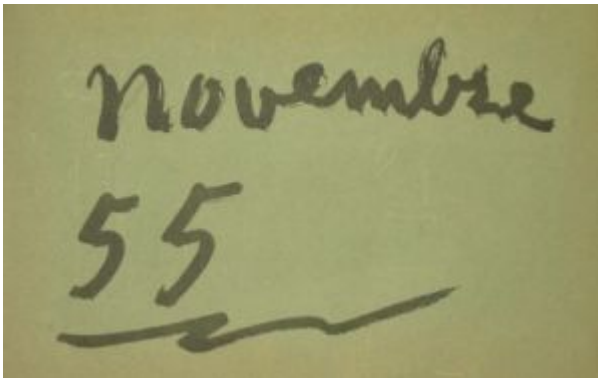
L'atelier de La Californie III. Cannes. 1-November/1955. India ink on paper. 21 x 27 cm. Musée Picasso, Paris. Dation 1979.

OPP.55:427; MPP:1508; PP.55:223c;
PA.79a*:n/a

L'atelier de La Californie. Cannes. November/1955. Color pencils. 26,5 x 42 cm. Private collection. Le Carnet de La Californie.

OPP.55:165



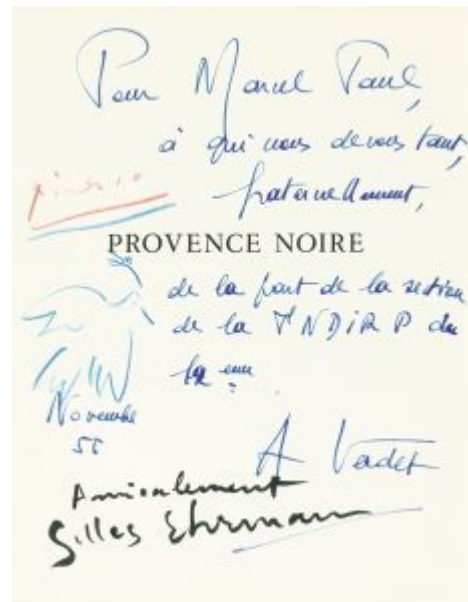


Novembre 55. Cannes. November/1955. Pencil. 26,5 x 42 cm. Private collection. Le Carnet de La Californie.

OPP.55:170

Colombe de la paix. Cannes. November/1956. Pastel on paper on title page of André Verdet, *Provence noire*. 26,9 x 20,3 cm. Sotheby's. #94, PF1706, 03/23/17.

OPP.55:421





L'atelier de La Californie XV. Cannes. 2-
November/1955. Color pencil. 26,5 x 42 cm.
Private collection. Le Carnet de La Californie.

OPP.55:168

L'atelier de La Californie I. Cannes. 2-
November/1955. Color pencil. 26,5 x 42
cm. Private collection. Le Carnet de La
Californie.

OPP.55:187





L'atelier de La Californie II. Cannes. 2-
November/1955. Color pencil. 26,5 x 42 cm.
Private collection. Le Carnet de La Californie.

OPP.55:188

L'atelier de La Californie III. Cannes. 3-
November/1955. Ink. 26,5 x 42 cm. Private
collection. Le Carnet de La Californie.

OPP.55:181





L'atelier de La Californie IV. Cannes. 3-
November/1955. Pencil. 26,5 x 42 cm. Private
collection. Le Carnet de La Californie.

OPP.55:182

L'atelier de La Californie I. Cannes. 3-
November/1955. Ink. 26,5 x 42 cm. Private
collection. Le Carnet de La Californie.

OPP.55:424





L'atelier de La Californie III. Cannes. 8-
November/1955. Color pencil. 26,5 x 42 cm.
Private collection. Le Carnet de La Californie.

OPP.55:189

L'atelier de La Californie IV. Cannes. 8-
November/1955. Color pencil. 26,5 x 42
cm. Private collection. Le Carnet de La
Californie.

OPP.55:190





L'atelier de La Californie V. Cannes. 8-
November/1955. Color pencil. 26,5 x 42 cm.
Private collection. Le Carnet de La Californie.

OPP.55:191

L'atelier de La Californie VI. Cannes. 8-
November/1955. Color pencil. 26,5 x 42
cm. Private collection. Le Carnet de La
Californie.

OPP.55:192





La corrida. Cannes. 10-November/1955. Wax crayon, brush & ink & felt-tip pen on paper. 27,2 x 42 cm. Sotheby's. #194, N09741, 11/15/17. Formerly Sotheby's. #184, N09568, 11/15/16; Sotheby's. #370A, N08241, 11/08/06.

OPP.55:161

Tête de faune séducteur. Antibes. 10-November/1955. Pen & ink with gouache on paper. 36,1 x 26,2 cm. Galerie Kornfeld und Cie, Bern. #00148, 06/17/11.

OPP.55:302





L'atelier de La Californie. Cannes. 12-
November/1955. Oil on canvas. 89 x 116 cm.
Private collection.

OPP.55:327; PP.55:224; Z.XVI:496; GL.57*:12;
PD.19:23p; PE.01a:151p

L'atelier de La Californie. Cannes. 13-
November/1955. Lithograph in black & ochre on
Arches. 45,5 x 37,5 cm. Sprengel Museum,
Hannover. Also Christie's. #259, 1322, 04/28/03.

OPP.55:101; B.I:778; M:267; JM.07*:15;
MF.10*:124p; RM.07*:108p; TO.99*:112





L'atelier (Jaume Sabartés, Dans L'atelier de Picasso).

Cannes. 13-November/1955. Lithograph in six colors. 44 x 33 cm. The Museum of Modern Art, NYC. (Inv 1013.1964.17). The Louis E. Stern Collection. Also Museu Picasso, Barcelona.

OPP.55:271; B.I:779; GC:88.01; M:269; MPB:70.687; MF.10*:125p; PM.10:95p; TO.99*:113

L'atelier de La Californie. Cannes. 13-November/1955. Ink. 26,5 x 42 cm. Private collection. Le Carnet de La Californie.

OPP.55:425





L'atelier. Cannes. 13-November/1955. Transfer lithograph [Alternate version of *L'atelier* (*Jaume Sabartés, Dans L'atelier de Picasso*)]. 44,2 x 32,9 cm. The Museum of Modern Art, NYC. (Inv 1013.1964.1). The Louis E. Stern Collection.

OPP.55:520

L'atelier de La Californie I. Cannes. 15-November/1955. Color pencil. 26,5 x 42 cm. Private collection. Le Carnet de La Californie.

OPP.55:171





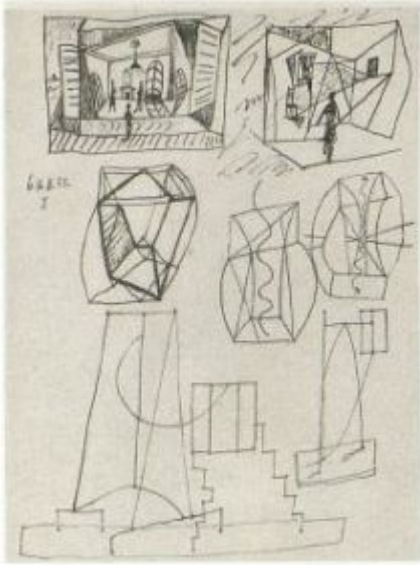
L'atelier de La Californie II. Cannes. 15-November/1955. Colored wax crayons on paper. [26,5 x 42] 24,1 x 31 cm. Christie's. #171, 6598, 05/12/88. Le Carnet de La Californie.

OPP.55:172; PP.55:224a

L'atelier de La Californie III. Cannes. 15-November/1955. Color pencil. 26,5 x 42 cm. Private collection. Le Carnet de La Californie.

OPP.55:173





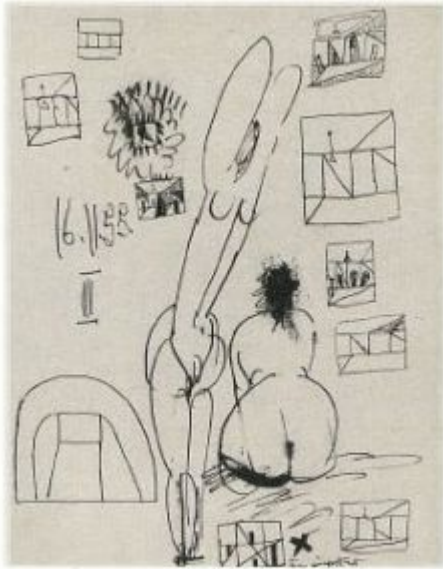
Études I. Cannes. 16-November/1955. India ink on paper. 32 x 24 cm. Private collection.

OPP.55:500; PP.55:225; Z.XVI:498



Études II. Cannes. 16-November/1955. India ink on paper. 32 x 24 cm. Private collection.

OPP.55:501; PP.55:226; Z.XVI:499



Études III. Cannes. 16-November/1955. India ink on paper.
32 x 24 cm. Private collection.

OPP.55:502; PP.55:227; Z.XVI:500

Intérieur (La Californie) I. Cannes. 17-
November/1955. India ink on paper. 32 x 24 cm. Private
collection.

OPP.55:503; PP.55:228; Z.XVI:501





Homme et femme II. Cannes. 17-November/1955. India ink & color pencil on paper [OïC]. 32 x 24 cm. Private collection.

OPP.55:504; PP.55:229; Z.XVI:502



Homme et femme III. Cannes. 17-November/1955. India ink & color pencil on paper [OïC]. 32 x 24 cm. Private collection.

OPP.55:505; PP.55:230; Z.XVI:503



L'atelier de La Californie I. Cannes. 19-
November/1955. Color pencil. 26,5 x 42 cm.
Private collection. Le Carnet de La Californie.

OPP.55:175

L'atelier de La Californie II. Cannes. 19-
November/1955. Color pencil. 26,5 x 42
cm. Private collection. Le Carnet de La
Californie.

OPP.55:176





Jacqueline au costume turc dans un fauteuil II.

Cannes. 19-November/1955. Oil on canvas. 100,3 x 81,3 cm. Private collection. Sotheby's. #21, 6768, 11/08/95. Formerly Joseph H. Hazen Collection, NY.

OPP.55:326; PP.55:232; Z.XVI:534; CM.94*:n/a; DQ.74:123p; GL.57*:13; JR.66b*:n/a; NY.57c*:n/a; NY.70g*:n/a; NY.71b*: 74

Femme assise au costume oriental. Vallauris. 19-November/1955. Oil on canvas [OïC]. 130 x 96 cm. Private collection.

OPP.55:508; PP.55:231; Z.XVI:532





Jacqueline en costume turc (Pour Jacqueline). Cannes. 20-November/1955. Oil on canvas. 81 x 100 cm. Catherine Hutin-Blay Collection, Paris. Formerly Jacqueline Roque Picasso Collection.

OPP.55:134; PP.55:233; AC.81:12p; BA.23*:58p; BA.90a*:5; BS.86a*:n/a; GP.96:328p; JL.66*:n/a; JL.71:176p; LM.17*:n/a; MA.91a*:5; MM.00:82p; MM.06*:37; MR.03*:99p; NI.83*:n/a; PA.82a*:n/a ; PD.09:449p; PD.19*:26; PF.10*:107; PJ.14*:73p; RP.67a:31; RR.09*:42; TO.04*:224; TO.14*:90; UP.00:1007; WR.80*:425p; WW.91:512p

Femme au costume turc dans un fauteuil (Jacqueline) II. Cannes. 20-November/1955. Oil on canvas. 92 x 73 cm. Christie's. #28, 1505, 02/04/14. Formerly Private collection, Munich. On loan to Pinakothek der Moderne, München.

OPP.55:255; PP.55:234; Z.XVI:533; BS.58*:n/a; GB.14:246p; MU.75*:n/a; PE.01a*:9





Femme en tenue turque VII. Cannes. 21-November/1955. Color pencil. 41 x 25 cm. Private collection. Le Carnet de La Californie.

OPP.55:158

Femme en tenue turque I. Cannes. 21-November/1955. Ink. 42 x 26,5 cm. Private collection. Le Carnet de La Californie.

OPP.55:177





Femme en tenue turque II. Cannes. 21-November/1955. Ink. 42 x 26,5 cm. Private collection. Le Carnet de La Californie.

OPP.55:178

Femme en tenue turque IV. Cannes. 21-November/1955.
Ink. 42 x 26,5 cm. Private collection. Le Carnet de La Californie.

OPP.55:179





Femme en tenue turque VI. Cannes. 21-November/1955. Color pencil. 42 x 26,5 cm. Private collection. Le Carnet de La Californie.

OPP.55:180

Lettre à Tobias Jellinek. Vallauris. 21-November/1955. Ink on paper. S/U. Tobias Jellinek Archive.

OPP.55:376; GB.14:166p

Je remercie le travail
de Toby Jellinek
et je l'apprecie
beaucoup
P. Picasso
Cannes le 21.11.55.



Femme en tenue turque III. Cannes. 21-November/1955. Ink on paper. 26,5 x 42 cm. Private collection. Le Carnet de La Californie.

OPP.55:528

Femme en tenue turque V. Cannes. 21-November/1955. Ink on paper. 42 x 26,5 cm. Private collection. Le Carnet de La Californie.

OPP.55:548





Femme assise au costume turc I. Cannes. 22-November/1955. Oil on canvas. 81 x 65 cm. Hamburger Kunsthalle, Hamburg. Geschenk des Kunsverein in Hamburg. Formerly Galerie Louise Leiris, Paris.

OPP.55:256; PP.55:263; Z.XVI:528; GB.14*:79; GC.96:264p; MM.67:66; PE.01a*:10



Femme accroupie en costume turc II (Jacqueline) II. Cannes. 22-November/1955. Oil on canvas. 91,5 x 73 cm. Christie's. #44C, 20180, 11/11/21.

OPP.55:324; PP.55:235; Z.XVI:535; AB.57*:111p; GL.57*:14; TA.00*:n/a; TA.02*:n/a; TG.88:26



Femme aux jambes croisées III. Cannes. 22-November/1955. Oil on canvas. 190,5 x 80 cm. Private collection.

OPP.55:346; PP.55:236; DD.61:247p; JR.10*:221p; PJ.14*:75p

Jacqueline à la tête turque. Cannes. 24-November/1955. Oil on canvas. [129,5 x 95,3] 130 x 97 cm. Stefan T. Ellis Collection. Formerly Galerie Louise Leiris, Paris.

OPP.55:233; PP.55:237; Z.XVI:527; GD.77:78p; GL.57*:15; JL.71:176p; PE.01a*:11; QP.64:245p





Femme accroupie au costume turc: femmes d'Alger (Jacqueline). Cannes. 26-November/1955. Oil on canvas. 114,9 x 89,5 cm. Christie's. #0073, 1900, 11/06/07. Formerly Helly Nahmad Collection, London; Mr. & Mrs. Klaus Perls Collection.

OPP.55:226; PP.55:238; Z.XVI:530; BA.90a*:6; BB.68*:23; EG.66*:34p; FM.00:27p; GL.57*:16; HO.19*:n/a; JR.62*:7.21; KG.71:111; KG.85:111; LO.98b*:108; NY.65d*:24; PE.01a*:12; RT.99*:68; TA.66*:45; TI.71:60; TK.64*:63; TK.77a*:n/a

Femme en tenue turque. Cannes. 26-November/1955. Color pencil. 41 x 25 cm. Private collection. Le Carnet de La Californie.

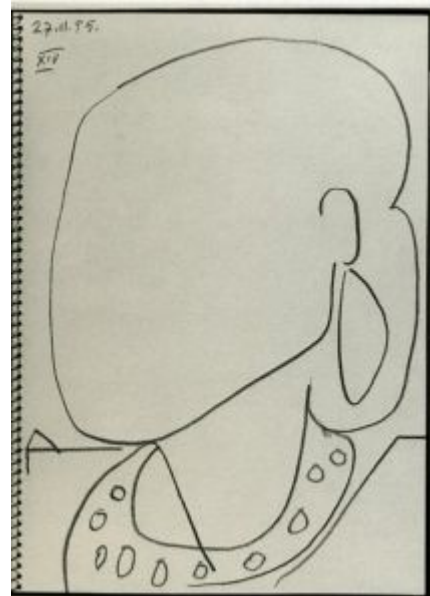
OPP.55:423





Portrait d'Hélène Rubinstein (Étude) XIII. Cannes. 27-November/1955. Conté crayon on paper. [43,5] 44 x 32 cm. Himeji City Museum of Art, Japan. Formerly Marina Picasso Collection. (Inv 10588-10611).

OPP.55:199; PP.55:251; Z.XVI:516; BA.03a*:256;
GS.85*:118.XVII; WR.96:21p



Portrait d'Hélène Rubinstein (Étude) XIV. Cannes. 27-November/1955. Conté crayon on paper. [43,5] 44 x 32 cm. Himeji City Museum of Art, Japan. Formerly Marina Picasso Collection. (Inv 10588-10611).

OPP.55:200; PP.55:252; Z.XVI:517; BA.03a*:257;
GB.14:26p; GS.85*:118.XVIII; WR.96:21p



Portrait d'Hélène Rubinstein (Étude) XVIII. Cannes. 27-November/1955. Conté crayon on paper. [43,5] 44 x 32 cm. Himeji City Museum of Art, Japan. Formerly Marina Picasso Collection. (Inv 10588-10611).

OPP.55:201; PP.55:256; Z.XVI:521; BA.03a*:258; GS.85*:118.XXII; WR.96:21p



Portrait d'Hélène Rubinstein (Étude) I. Cannes. 27-November/1955. [Conté] Black crayon. [44] 43,5 x 32 cm. Marina Picasso Collection. (Inv 10588-10611). Courtesy Galerie Jan Krugier, Geneva.

OPP.55:284; PP.55:239; Z.XVI:504; GS.85*:118



Portrait d'Hélène Rubinstein (Étude) II. Cannes. 27-November/1955. [Conté] Black crayon. [44] 43,5 x 32 cm. Marina Picasso Collection. (Inv 10588-10611). Courtesy Galerie Jan Krugier, Geneva.

OPP.55:285; PP.55:240; Z.XVI:505; GS.85*:118



Portrait d'Hélène Rubinstein (Étude) IV. Cannes. 27-November/1955. [Conté] Black crayon. [44] 43,5 x 32 cm. Marina Picasso Collection. (Inv 10588-10611). Courtesy Galerie Jan Krugier, Geneva.

OPP.55:286; PP.55:242; Z.XVI:511; GS.85*:118



Portrait d'Hélène Rubinstein (Étude) IX. Cannes. 27-November/1955. [Conté] Black crayon. [44] 43,5 x 32 cm. Marina Picasso Collection. (Inv 10588-10611). Courtesy Galerie Jan Krugier, Geneva.

OPP.55:287; PP.55:247; Z.XVI:512; GS.85*:118



Portrait d'Hélène Rubinstein (Étude) VIII. Cannes. 27-November/1955. [Conté] Black crayon. [44] 43,5 x 32 cm. Marina Picasso Collection. (Inv 10588-10611). Courtesy Galerie Jan Krugier, Geneva.

OPP.55:288; PP.55:246; Z.XVI:510; GS.85*:118



Portrait d'Hélène Rubinstein (Étude) X. Cannes. 27-November/1955. [Conté] Black crayon. [44] 43,5 x 32 cm. Marina Picasso Collection. (Inv 10588-10611). Courtesy Galerie Jan Krugier, Geneva.

OPP.55:289; PP.55:248; Z.XVI:513; GS.85*:118

Portrait d'Hélène Rubinstein (Étude) XV. Cannes. 27-November/1955. [Conté] Black crayon. [44] 43,5 x 32 cm. Marina Picasso Collection. (Inv 10588-10611). Courtesy Galerie Jan Krugier, Geneva.

OPP.55:290; PP.55:253; Z.XVI:518; GS.85*:118





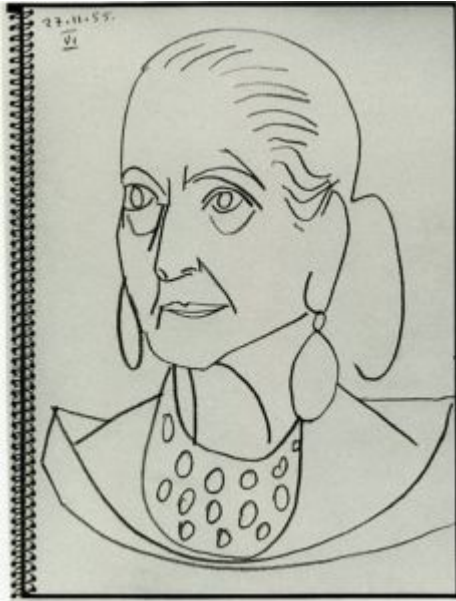
Portrait d'Hélène Rubinstein (Étude) XVI. Cannes. 27-November/1955. [Conté] Black crayon. [44] 43,5 x 32 cm. Marina Picasso Collection. (Inv 10588-10611). Courtesy Galerie Jan Krugier, Geneva.

OPP.55:291; PP.55:254; Z.XVI:519; GS.85*:118

Portrait d'Hélène Rubinstein (Étude) V. Cannes. 27-November/1955. [Conté] Black crayon. [44] 43,5 x 32 cm. Marina Picasso Collection. (Inv 10588-10611). Courtesy Galerie Jan Krugier, Geneva.

OPP.55:292; PP.55:243; Z.XVI:507; GS.85*:118





Portrait d'Hélène Rubinstein (Étude) VI. Cannes. 27-November/1955. [Conté] Black crayon. [44] 43,5 x 32 cm. Marina Picasso Collection. (Inv 10588-10611). Courtesy Galerie Jan Krugier, Geneva.

OPP.55:293; PP.55:244; Z.XVI:508; GS.85*:118



Portrait d'Hélène Rubinstein (Étude) VII. Cannes. 27-November/1955. [Conté] Black crayon. [44] 43,5 x 32 cm. Marina Picasso Collection. (Inv 10588-10611). Courtesy Galerie Jan Krugier, Geneva.

OPP.55:294; PP.55:245; Z.XVI:509; GS.85*:118

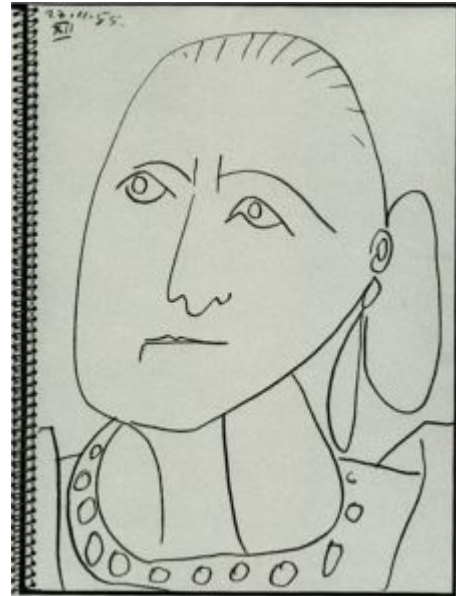


Portrait d'Hélène Rubinstein (Étude) XI. Cannes. 27-November/1955. [Conté] Black crayon. [44] 43,5 x 32 cm. Marina Picasso Collection. (Inv 10588-10611). Courtesy Galerie Jan Krugier, Geneva.

OPP.55:295; PP.55:249; Z.XVI:514; GS.85*:118

Portrait d'Hélène Rubinstein (Étude) XII. Cannes. 27-November/1955. [Conté] Black crayon. [44] 43,5 x 32 cm. Marina Picasso Collection. (Inv 10588-10611). Courtesy Galerie Jan Krugier, Geneva.

OPP.55:296; PP.55:250; Z.XVI:515; GS.85*:118





Portrait d'Hélène Rubinstein (Étude) XVII. Cannes. 27-November/1955. [Conté] Black crayon. [44] 43,5 x 32 cm. Marina Picasso Collection. (Inv 10588-10611). Courtesy Galerie Jan Krugier, Geneva.

OPP.55:297; PP.55:255; Z.XVI:520; GS.85*:118



Portrait d'Hélène Rubinstein (Étude) XIX. Cannes. 27-November/1955. [Conté] Black crayon. [44] 43,5 x 32 cm. Marina Picasso Collection. (Inv 10588-10611). Courtesy Galerie Jan Krugier, Geneva.

OPP.55:298; PP.55:257; Z.XVI:522; GS.85*:118



Portrait de Héléna Rubinstein III. Cannes. 27-November/1955. Conté crayon on paper. 44 x 32 cm. Private collection.

OPP.55:340; PP.55:241; Z.XVI:506

Jacqueline en costume turc. Cannes. 29-November/1955. Oil on canvas. 81 x 65 cm. Catherine Hutin-Blay Collection, Paris. Formerly Jacqueline Roque Picasso Collection.

OPP.55:002; PP.55:258a; BA.90a*:7; DD.61:247p; GC.07:158p; GP.96:327p; LE.07*:72; MA.91a*:6; MG.03b*:66; MM.06*:38; MM.85a*:43; PA.82a*:n/a; PD.19*:25; PJ.14*:77p; TO.14*:91; WR.96:457p; WW.91:526p





Buste et tête de femme (d'après Lucas Cranach). Cannes. 30-November/1955. Ink. 42 x 26,5 cm. Private collection. Le Carnet de La Californie.

OPP.55:183

Femme nue au bonnet turc. Cannes. 1-December/1955. Oil on canvas. 116 x 89 cm. Musée National d'Art Moderne, Centre Georges Pompidou, Paris. (Inv AM.1984.637). Donation Louise et Michel Leiris, 1984.

OPP.55:005; PP.55:259; Z.XVI:529; BA.22*:54p; BA.90a*:8; BP.21:86p; DU.95*:95p; GB.87:223; GP.88*:n/a; GP.96:327p; HS.98*:127; MA.81b*:n/a; MA.91a*:7; ND.01*:36; PA.19d*:332; PA.84a*:n/a; PD.09:415p; PE.01a*:13; PE.17*:147p; PF.10*:106; PI.03:32; RR.09*:43; UP.00:1009; VO.16:143p; WW.91:527p





Hans Holbein. Cannes. 13-December/1955. Ink. 42 x 26,5 cm.
Private collection. Le Carnet de La Californie.

OPP.55:169

Portrait de Jacqueline. Cannes. 13-December/1955. Graphite on paper. 60 x 50 cm.
Private collection.

OPP.55:506; PP.55:261; Z.XVI:524





Portrait de Jacqueline. Cannes. 13-December/1955. India ink on paper. 65 x 50 cm. Private collection.

OPP.55:507; PP.55:262; Z.XVI:526

L'atelier de La Californie. Cannes. 15-December/1955. Color pencil. 42 x 26,5 cm. Private collection. Le Carnet de La Californie.

OPP.55:174





Lettre manuscrite à Max Pellequer. Cannes. 21-December/1955. Ink on paper. S/U. Piasa. #45, 2142, 02/15/24. Formerly Max Pellequer Collection.

OPP.55:574

Colombes. Cannes. Winter/1955~1956. Colored crayons [Oic]. 31,1 x 21 cm. Private collection. Formerly Sotheby's. #90, 05/23/90.

OPP.55:046; PP.55:267a





El Picador. Cannes. Winter/1955~1956. Brush & black ink. 15 x 10 cm. Private collection. Formerly Christie's. #188, 11/28/89.

OPP.55:558; PP.55:268b

El Picador. Cannes. Winter/1955~1956. Brush & black ink. 15 x 10 cm. Private collection. Formerly Christie's. #188, 11/28/89.

OPP.55:559; PP.55:268b





El Picador. Cannes. Winter/1955~1956. Brush & black ink. 15 x 10 cm. Private collection. Formerly Christie's. #188, 11/28/89.

OPP.55:560; PP.55:268c



El Fumador. Cannes. Winter/1955~1956. Brush & black ink. 15 x 10 cm. Private collection. Formerly Christie's. #188, 11/28/89.

OPP.55:561; PP.55:268d



Fernando Bergamin. Cannes. Winter/1955~1956. Brush & black ink. 15 x 10 cm. Private collection. Formerly Christie's. #188, 11/28/89.

OPP.55:562; PP.55:268e

El Picador. Cannes. Winter/1955~1956. Brush & black ink. 15 x 10 cm. Private collection. Formerly Christie's. #188, 11/28/89.

OPP.55:563; PP.55:268f





El Matador. Cannes. Winter/1955~1956. Brush & black ink. 15 x 10 cm. Private collection. Formerly Christie's. #188, 11/28/89.

OPP.55:564; PP.55:268g

Jacqueline au mouchoir noir. Cannes. 28-December/1955. Linoleum cut. [54,9 x 51,1] 55,2 x 50,2 cm. Museum Ludwig, Köln. (Inv ML/G 2001/110). Schenkung 2001. Also The Museum of Modern Art, NYC. (Inv178.2003). Acquired through the generosity of Mrs. Edmond J. Safra and the General Print Fund.

OPP.55:278; Ba:1033; PJ.14*:78p;
WR.96:460p





Portrait de femme II (Jacqueline). Cannes. 29-December/1955. Lithograph, edition 50. 64,5 x 37,3 cm. Kunsthalle Bremen. Der Kunstverein in Bremen, Kupferstichkabinett. Also Sotheby's. #262, L00119, 06/21/00; Mr. & Mrs. Mitchell Miller Collection.

OPP.55:035; B.I:780; M:272; BA.90a*:93; GB.14*:147; MA.91a*:87; MD.02*:330p; PJ.14*:79p; WC.62*:72; WR.96:460p

Portrait de Jacqueline. Paris. 30~31-December/1955. Pen & India ink over linoleum cut proof. 66 x 58 [50,7] cm. Museum Ludwig, Köln. (Inv ML/Z 2001/061). Schenkung 2001.

OPP.55:251; PP.55:264; Z.XVI:525; WO.92*:68; WR.96:460p





Oiseau et poissons. Vallauris. 1955. Earthenware vase, edition 25. 49 cm. The Hirshhorn Museum and Sculpture Garden, Smithsonian Institution, Washington, DC. (Inv 86.3616). The Joseph H. Hirshhorn Bequest, 1981. Also Christie's. #219, 6683, 10/09/02.

OPP.55:040; AR:291; B.III:62; CE.04*:264; IG.89*:n/a; LR.07*:56

Lampe-femme. Vallauris. 1955. Earthenware vase partially glazed on the interior, painted in brown, blue & black. 36,8 cm. Sotheby's. #119, N07844, 11/16/02.

OPP.55:044; AR:294





Visage. Vallauris. 1955. Painted & partially glazed white earthenware pitcher, edition 500. 31,5 cm. Sotheby's. #99, W04701, 02/04/04.

OPP.55:107; AR:288; TR.65*:27

Taureau. Cannes. 1955. Bronze, black patina, edition 12. [11,1] 6,6 cm. The Hirshhorn Museum and Sculpture Garden, Smithsonian Institution, Washington, DC. (Inv 66.4053). Gift of Joseph H. Hirshhorn, 1966. Also Sotheby's. #168, N08090, 05/04/05.

OPP.55:125; ML.05*:64p



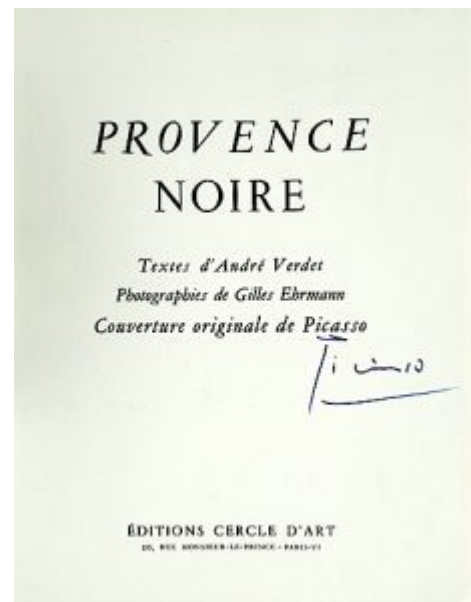


Femme asse dans un fauteuil (André Suarès, Hélène Chez Archimède). Cannes. 1955.
Woodcut on paper, Edition 240. 43,2 x 28 cm.
Galerie Michael, Beverly Hills, CA. 2007.

OPP.55:162

Dédicace. Cannes. [1955]. Ink. S/U. Artcurial. #924,
1211, 05/04/07.

OPP.55:219





Tête. Vallauris. [1950]~1955. Stone. 19 x 18,5 cm. Private collection.

OPP.55:220; PP.55:074b; WS:502.B

Études. Cannes. 1955. Wood engraving, edition 140. 45,5 x 34,5 cm. Christie's. #0266, 1965, 02/07/08.

OPP.55:227





Couple. Cannes. 1955. Wood-enchaving on cream Marais wove paper [After *Couple*]. 27,7 x 20,3 cm. The Museum of Modern Art, NYC. (Inv 1008.1964.A-B). The Louis E. Stern Collection.

OPP.55:228

Visage dans un ovale. Vallauris. 1955. White earthenware oval dish, decoration in engobes & engraved under brushed glaze. 33 x 40 cm. Sotheby's. #49, L13162, 03/19/13.

OPP.55:229; AR:277





Visage. Vallauris. 1955. White earthenware dish, decoration in engobes, glazed. S/U. Private collection.

OPP.55:230

Visage dans un ovale. Vallauris. 1955. White earthenware dish, decoration in engobes, glazed. 33 x 40 cm. Christie's. #201, 4232, 06/25-26/12.

OPP.55:232; AR:278





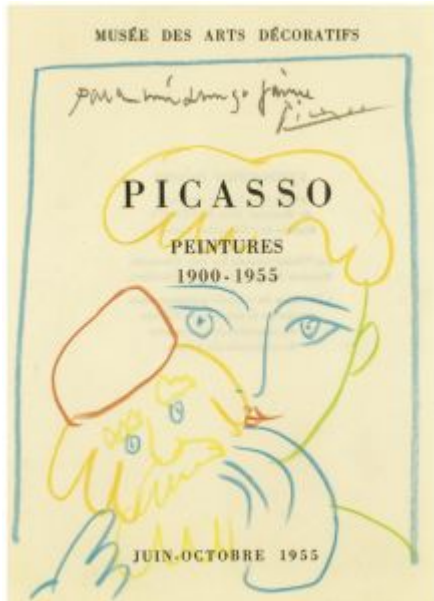
Exposition 55 Vallauris. Vallauris. 1955. Linoleum cut in colors on thin wove paper, edition 600. 66,3 x 53,1 [53] cm. Galerie Michael, Beverly Hills, CA. 2008.

OPP.55:234; B.I:1268; Ba:1032.B; P.P.L:011; M.G.00:10;
M.M.11b*:85

Hommage des artistes espagnols au poète Antonio Machado (Pour Inès). Cannes. 1955. Offset lithograph in black [After *Portrait de Antonio Machado*]. 64,9 x 50 cm. Musée Picasso, Paris. (Inv BIB005074). Also Museu Picasso, Barcelona; Artcurial. #350, 1331, 10/22/07.

OPP.55:237; CC:102.B; MPB:70.826; M.G.00:32;
TO.04*:281





Tête avec masque (Para mi amigo Jaime). Cannes. 1955. Colored crayon on printed paper. 21 x 15,5 cm. Sotheby's. #196A, L08009, 06/26/08.

OPP.55:239; PP.55:267

Dédicace à Manuel Pallarès. [Cannes]. [1955]. Color pencil on paper. 19,1 x 12,5 cm. Galeria Mayoral, Barcelona. 2008.

OPP.55:242





Visage de faune. Cannes. 1955. White earthenware cupel, engraving accentuated with oxidized parafin glaze bath, edition 100. 18 cm. RoGallery. 2008.

OPP.55:245

1955 Exposition de Vallauris. Vallauris. 1955. Linoleum cut. 90,2 x 59,1 cm. Scottish National Gallery of Modern Art, Edinburgh. (Inv GMA 5316). Also Bonhams. #108, 16844, 12/15/09.

OPP.55:248; B.I:1267; Ba:1031.B; JR.10*:132p; MG.00:9; MM.11b*:83





Mousquetaire a cheval. Cannes. 1955. Paper cut-out, colored with crayons. [11,4 x 10,2] [11 x 9,5] 10,5 x 9,6 cm. Artnet. 06/02/2011. Formerly Christie's. #621, 2047, 11/07/08; Artcurial. #240, 1331, 10/22/07; Inès and Gérard Sassier.

OPP.55:252

Lampe femme. Vallauris. 1955. Earthenware pitcher, decoration in engobes, edition 100. 27 cm. Sotheby's. #178, N08674, 10/29/10.

OPP.55:267; AR:295; CE.04*:262



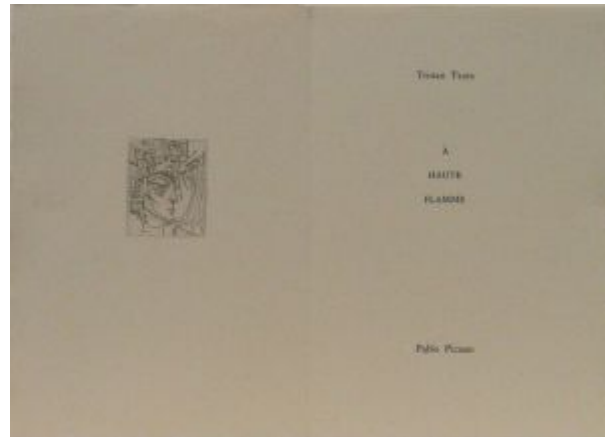


Titre page (Tristan Tzara, *À Haute Flamme*). Cannes. 1955. Drypoint on celluloid. 21,2 x 14,5 cm. The Museum of Modern Art, NYC. (Inv 1007.1964.1). The Louis E. Stern Collection.

OPP.55:273; B.I:781; GC:72.1

Tête de femme (Tristan Tzara, *À Haute Flamme*). Cannes. 1955. Drypoint on celluloid. 23 x 16 cm. The Museum of Modern Art, NYC. (Inv 1007.1964.1-6). The Louis E. Stern Collection.

OPP.55:274; B.I:782; GC:72.2



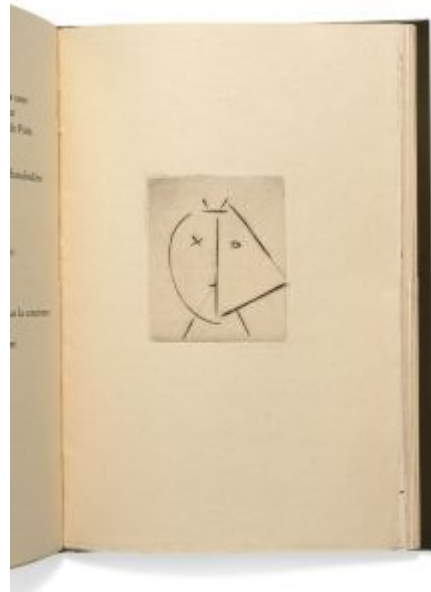


Nu (Tristan Tzara, À Haute Flamme). Cannes. 1955.
Drypoint on celluloid. 23 x 16 cm. The Museum of Modern Art,
NYC. (Inv 1007.1964.3). The Louis E. Stern Collection.

OPP.55:275; B.I:783; GC:72.3

Visage (Tristan Tzara, À Haute Flamme). Cannes.
1955. Drypoint on celluloid. 7,4 x 6,1 cm. The Museum of
Modern Art, NYC. (Inv 1007.1964.4). The Louis E. Stern
Collection.

OPP.55:276; B.I:784; GC:72.4





Nu à la bougie (Tristan Tzara, À Haute Flamme). Cannes. 1955. Drypoint on celluloid. 12,2 x 9,7 cm. The Museum of Modern Art, NYC. (Inv 1007.1964.5). The Louis E. Stern Collection.

OPP.55:277; B.I:785; GC:72.5

Visage dans un ovale. Vallauris. 1955. Glazed ceramic plate. 39,9 cm. Christie's. #204, 4232, 06/25-26/12.

OPP.55:306; AR:280





Visage dans un ovale. Vallauris. 1955. Glazed ceramic plate. 40 cm. Christie's. #203, 4232, 06/25-26/12.

OPP.55:310; AR:281

Visage dans un ovale. Vallauris. 1955. Glazed ceramic plate. 39,7 cm. Christie's. #202, 4232, 06/25-26/12.

OPP.55:312; AR:279





Portrait de Antonio Machado. Cannes. 1955. Offset lithograph [After *Portrait de Antonio Machado*]. 64,8 x 50 cm. Bonhams. #10, 19088, 09/27/11.

OPP.55:315; CC:89

Guernica. Paris. 1955. Tapestry by Jacqueline de la Baume Dürrbach [After *Guernica*]. 304,8 x 670,6 cm. Nelson A. Rockefeller Jr. Collection, NYC.

OPP.55:316; PA.21f*:103; TI.71:46





Figure (André Suarès, Hélène Chez Archimède). Vallauris. 1955. Engraving. 44 x 32,4 cm. Christie's. #93, 3518, 10/29/12.

OPP.55:317

Buste de femme au chapeau bleu. Cannes. 1955 [1960].
Offset lithograph printed in colors [After *Buste de femme au chapeau bleu*]. 92,1 x 60,3 cm. Christie's. #194, 1428, 11/02/04.

OPP.55:328; CC:92





Grand masque: visage découpage. Cannes. 1955.
Pastel on cut cardboard with string. 32,5 x 31 cm.
Fundación Almine & Bernard Ruiz-Picasso para el Arte.

OPP.55:344; DO.07*:216; JR.10*:189p

Masque: découpage. Cannes. [1955]. Pastel & charcoal on
cut & folded cardboard with gilded string. 13 x 13 cm.
Fundación Almine & Bernard Ruiz-Picasso para el Arte.

OPP.55:345; DO.07*:217; JR.10*:189p





Jeux de plage. Cannes. 1955. Oil with gasoline on paper. 43 x 72 cm. Private collection.

OPP.55:347; JR.10*:241p

Chouette ébouriffée. Vallauris. 1955. Hand-painted white earthenware. 29,5 cm. Sotheby's. #223, N08988, 05/08/13.

OPP.55:352; AR:292; CE.04*:265





Visage lunaire. Vallauris. 1955. White earthenware, unique, partially glazed & hand-painted yellow, blue & purple. 31 cm. Sotheby's. #175, L13161, 09/17/13.

OPP.55:353

Comptoir et guitare, fond gris. Cannes. 1955. Pochoir [After *Comptoir et guitare, fond gris*]. 28 x 20,6 cm. Goldmark Gallery. 2013.

OPP.55:374





Dédicace (À Bernard). Cannes. 1955. Ink on photograph. 24 x 18 cm. Sotheby's. #121, PF1404, 05/22/14.

OPP.55:378

Femme. Vallauris. 1955. Partially glazed ceramic pitcher. 30 cm. Christie's. #61, 5377, 06/26/14.

OPP.55:389





Jeune femme dans un fauteuil. Cannes. 1955.
Lithograph [After *Jeune femme dans un fauteuil*]. S/U.
Private collection.

OPP.55:391

Femme avec jupe à rayures. Vallauris. 1955. Painted & incised
ceramic; jug. 29,5 cm. Sotheby's. #125, L15007, 06/25/15.

OPP.55:400





Masque. Cannes. 1955. Cut corrugated cardboard. 12 x 27 cm. Fundación Almine & Bernard Ruiz-Picasso para el Arte.

OPP.55:404; DO.07*:218

Visage de faune. Paris. 1955. Silver, edition 20 [Cast after *Tête de faune*]. 24,8 cm. Sotheby's. #389, N08127, 11/03/05.

OPP.55:405; CG.23:53p





Visage de faune. Cannes. 1955. Repoussé gold medallion (PH 1409) [Cast after *Tête de faune*]. 5 cm. Christie's. #86, 6683, 10/09/02.

OPP.55:406; CG.23:71p

Femme à la robe entrouverte. Vallauris. 1955. Painted ceramic tall jug. 29,4 cm. Sotheby's. #531, L16005, 02/05/16. Formerly Marina Picasso Collection.

OPP.55:407; FB.13*:n/a; HB.85*:n/a





Plat aux oeufs. Vallauris. [1955]. White earthenware ceramic plate, partially engraved, with colored engobe & glaze. 27,9 cm. Christie's. #225, 11133, 02/05/16. Formerly Miguel Bosé Collection.

OPP.55:411

Sans titre. Vallauris. 1955. Terracotta napkin ring, painted. 2,4 x 6,7 x 5,8 cm. Museu Termàlia, Caldes de Montbui.

OPP.55:415; CE.04*:191





Sans titre. Vallauris. 1955. Terracotta napkin ring, painted. 5,2 x 8 x 6,8. Museu Thermàlia, Caldes de Montbui.

OPP.55:416; CE.04*:189

Sardane. Vallauris. 1955. Terracotta napkin ring, painted. 6 x 8,5 x 6,8 cm. Museu Thermàlia, Caldes de Montbui.

OPP.55:417; CE.04*:193





Quatre chevaux courant. Vallauris. 1955.
Terracotta napkin ring, painted. 5,7 x 8,2 x 7,4
cm. Museu Thermàlia, Caldes de Montbui.

OPP.55:418; CE.04*:190

Sans titre. Vallauris. 1955. Terracotta
napkin ring, painted. 4,5 x 8,1 x 6,6 cm.
Museu Thermàlia, Caldes de Montbui.

OPP.55:419; CE.04*:194





Trois pigeons. Vallauris. 1955. Terracotta napkin ring, painted. 5,7 x 8,2 x 7,4 cm. Museu Termàlia, Caldes de Montbui.

OPP.55:420; CE.04*:192

Tête-Cruche. Cannes. [1955]. Marker on paper. 29,7 x 21,3 cm. Galería Daniel Cardani. 2017.

OPP.55:426





La cruche fleurie. Paris. [1955]. Aquatint in colors on wove paper [After *La cruche fleurie*]. S/U. Private collection.

OPP.55:510

Couple nu dansant. Cannes. 1955. Ink & gouache on paper. 71,6 x 43 cm. Catherine Hutin-Blay Collection, Paris. Formerly Jacqueline Roque Picasso Collection.

OPP.55:512; PD.19*:102





Plomb ayant servi à l'impression de journal L'Humanité.

Paris. 1955. Lead [Plate for *Portrait d'homme (Commémoration du dixième anniversaire de la libération d'Auschwitz)*]. 53,5 x 37,5 cm. Musée de la Résistance nationale, Champigny-Sur-Marne.

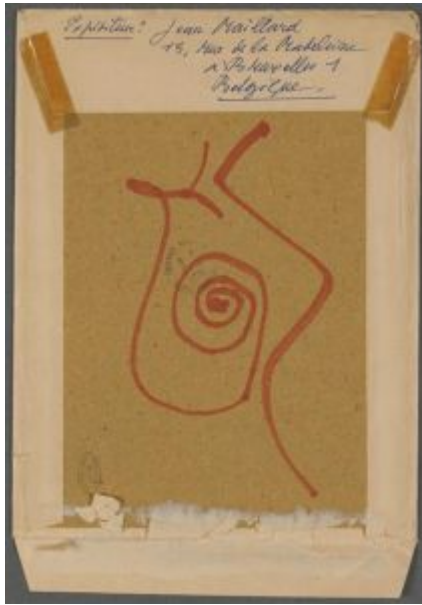
OPP.55:514; PA.19d*:249

Enveloppe expédiée de Belgique par Jean Maillard à Picasso à Cannes contenant apparemment des photographies, annotée (Adresse).

Cannes. [1955]. Crayon on envelope [Obverse]. S/U. Musée Picasso, Paris.

OPP.55:515



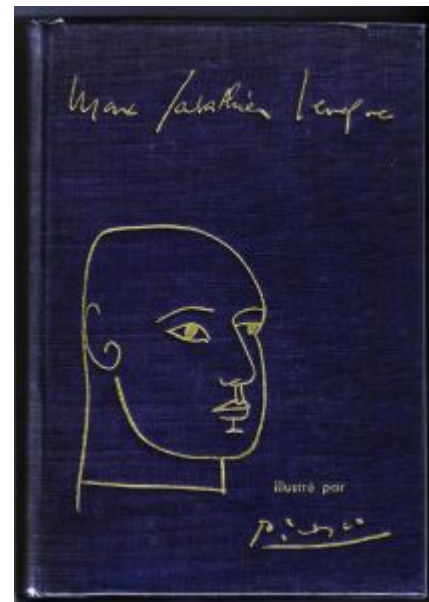


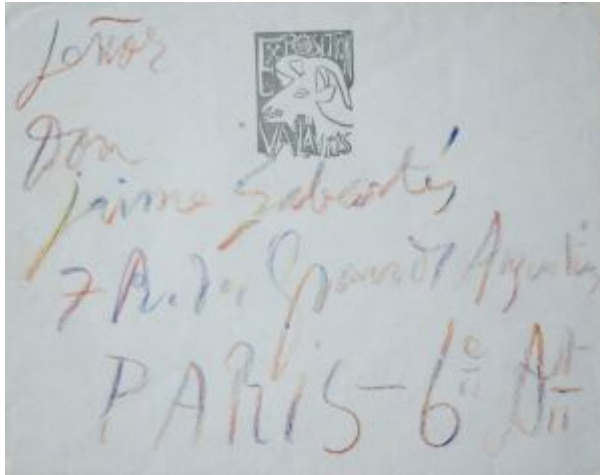
Enveloppe expédiée de Belgique par Jean Maillard à Picasso à Cannes contenant apparemment des photographies, annotée (Escargot). Cannes. [1955]. Crayon on envelope [Reverse]. S/U. Musée Picasso, Paris.

OPP.55:516

Couverture (Marc Sabathier-Lévêque, Oratorio pour la nuit de Noël). Paris. 1955. Mixed media. S/U. Private collection.

OPP.55:517; PE.17*:42p



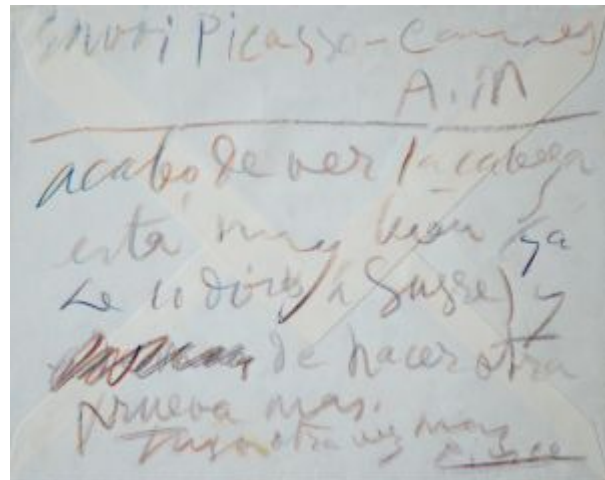


Enveloppe-lettre autographe. Cannes. [1955]. Color pencils on envelope [Obverse of *Enveloppe-lettre autographe*]. S/U. Traces Escrites. 2019.

OPP.55:518

Enveloppe-lettre autographe. Cannes. [1955]. Color pencils on paper [Reverse of *Enveloppe-lettre autographe*]. S/U. Traces Escrites. 2019.

OPP.55:519





Profile de Jacqueline avec foulard. Cannes. 1955.
Linoleum cut for *Jacqueline au mouchoir noir*. 55 x 51
cm. Museum Ludwig, Köln. (Inv ML/G 2001/109).
Schenkung 2001.

OPP.55:522

Couverture (Tristan Tzara, À Haute Flamme).
Cannes. 1955. Mixed media. 12,2 x 9,7 cm. Christie's.
#169, 18402, 02/02/21.

OPP.55:526; GC:72.c



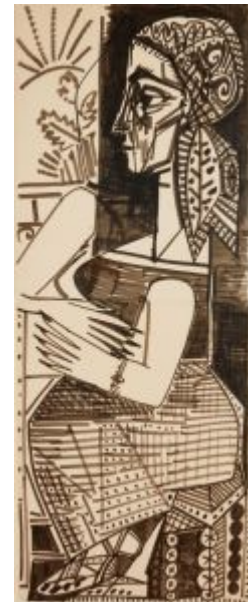


Autoportrait en homme faune (Avec André Villers).
Cannes~Vallauris. 1955. Gelatin silver print. 30,5 x 24 cm.
Musée Picasso, Paris. (Inv APPH1955).

OPP.55:535; PA.20j*:186

Jacqueline. Cannes. 1955. Ink on paper. 132,8 x 57,2 cm. Private collection.

OPP.55:536; PP.55:265; NY.21g*:74





Guernica. Paris. [1955] [1976]. Tapestry by Jacqueline de la Baume Dürrbach [After *Guernica*]. 331 x 698 cm. Musée Unterlinden, Colmar. (Inv 79.3.1).

OPP.55:537; PA.21f*:104

Femme assise (André Suarès, Hélène Chez Archimède). Paris. 1955. Woodcut on paper. 44 x 32,6 cm. Christie's. #146, 21395, 05/02-12/22.

OPP.55:543



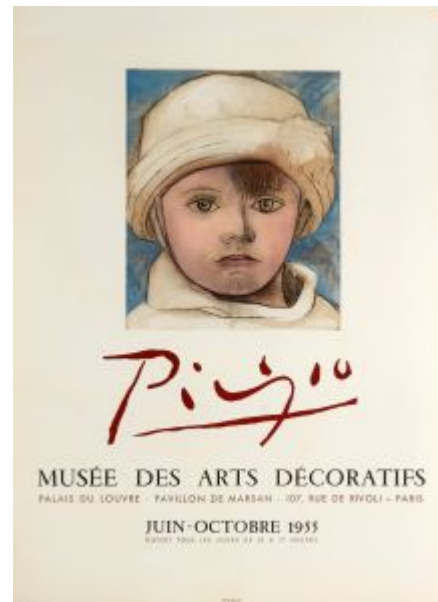


Les demoiselles d'Avignon. Paris. 1955. Lithograph printed in colors [After *Les demoiselles d'Avignon*]. 50 x 47,1 cm. Sotheby's. #27, N10974. 06/29/22.

OPP.55:546

Affiche pour la rétrospective Picasso 1900-1955 du Musée des Arts décoratifs, 1955. Paris. 1955. Poster [After *Portrait de Paulo, le fils de l'artiste*]. 64 x 46 cm. Musée des Arts décoratifs, Paris. (Inv)RI 2016.14.375).

OPP.55:547; LE.21:174p



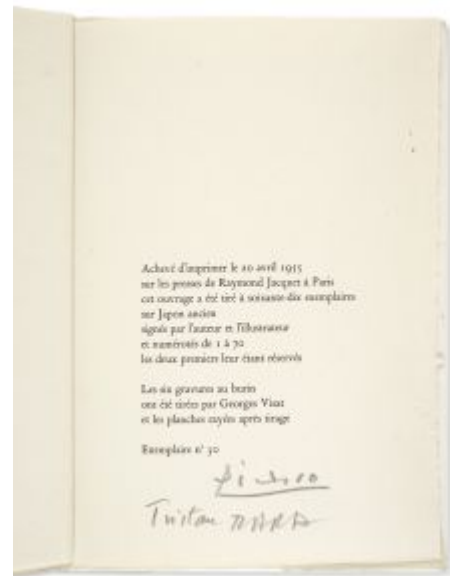


Carte postale à Willi Maubach. [Cannes]. [1955]. Green ink on postcard. 15,2 x 22,9 cm. KOTTE Autographs GmbH, Rosshaupten.

OPP.55:583

Signature. Paris. 1955. Ink on page of the book Tristan Tzara, À haute flamme. 23,3 x 15,9 cm. Christie's. #163, 22918, 03/12-21/24.

OPP.55:585





Taureau. Vallauris. [1955]. White earthenware pitcher, decoration in engobes, knife engraved. 30 x 21 cm. Private collection.

OPP.55:586; MI.18*:n/a

Nu à la bougie (Tristan Tzara, À Haute Flamme). Cannes. 1955. Cancelled drypoint on celluloid. 12,2 x 9,5 cm. Private collection.

OPP.55:587; B.I:787





Visage. Vallauris. 1955. Earthenware bowl painted & glazed, edition 500. 13 x 13 cm. Sotheby's. #118, W04704, 03/24/04.

OPP.55:018; AR:290

Lampe femme. Vallauris. 1955. Earthenware vase, painted blue & gray, edition 100. 35,5 cm. Sotheby's. #N08123, 359, 10/28/05.

OPP.55:019; AR:298





Femme. Vallauris. 1955. Earthenware pitcher painted, edition 200. 30,5 cm. Sotheby's. #470, N07717, 11/02/01.

OPP.55:020; AR:297; CE.04*:263; HK.14*:110p

Visage d'homme. Vallauris. 1955. Earthenware plate painted & partially glazed, edition 350. 39,5 x 32 cm. Sotheby's. #128, 10/25/00.

OPP.55:021; AR:287





Femme. Vallauris. 1955. Earthenware pitcher, partially glazed, edition 50. 33,1 cm. Christie's. #433, 9065, 04/06/01.

OPP.55:025; AR:296

Femme. Vallauris. 1955. Earthenware pitcher, edition 57/200. 130 cm. The Museum of Art, Fort Lauderdale. Also Christie's. #168, 9712, 06/13/01.

OPP.55:027; AR:301; CC.01*:72p





Le hibou brillant. Vallauris. 1955. White earthenware plate, edition 450. 32 x 39 cm. Christie's. #454, 5814, 04/07/05.

OPP.55:029; AR:285

Exposition Vallauris 1955. Vallauris. 1955. Linoleum cut printed in brown. [100 x 65] 89 x 59,4 cm. The Museum of Modern Art, NYC. (Inv 377.1956). Gift of René Batigne.

OPP.55:032; B.I:1266; MG.00:8; MM.11b*:84



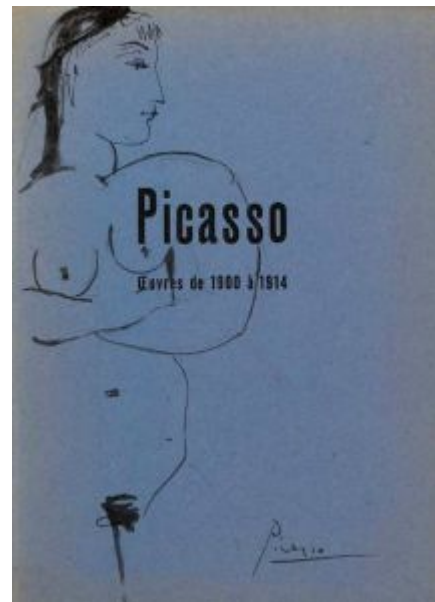


Femme. Vallauris. 1955. Earthenware pitcher, partially glazed, painted in blue, beige & black. 30,5 x 10 cm. Sotheby's. #471, N07717, 11/02/01.

OPP.55:034; AR:300

Femme aux bras croisés. [Paris]. 1955. Pencil, pen & black ink on cover of Maurice Raynal, Picasso: Oeuvres des Musées de Léningrad et de Moscou 1900-1914 (1955). 21,5 x 15,8 cm. Christie's. #99, 9315, 03/21/02.

OPP.55:037





Hibou mat. Vallauris. 1955. Rectangular earthenware charger glazed on the verso, painted in black, blue & brown. [39 x 32] 37,5 x 30,5 cm. Musée Magnelli de la Céramique, Vallauris. Also Sotheby's. #118, N07844, 11/16/02.

OPP.55:045; AR:284; CP.95:83p; GR.74:726

Cruchon hibou. Vallauris. 1955. White earthenware pitcher, decoration in oxides & engraved by knife on white enamel, painted in black, blue & brown, edition 500. [25,4] 27 x 13 cm. Sotheby's. #68, W03716, 10/22/03.

OPP.55:104; AR:293; GR.74:711; LV.07*:n/a





Lampe-femme. Vallauris. 1955. White earthenware vase, painted in blue & beige, edition 200. 35,2 cm. Sotheby's. #426, N07931, 10/31/03.

OPP.55:105; AR:299

Picador. Vallauris. 1955. Ceramic bowl, edition 500. 12,5 cm. Andrew Weiss Gallery. 2005.

OPP.55:108; AR:289; TR.65*:21



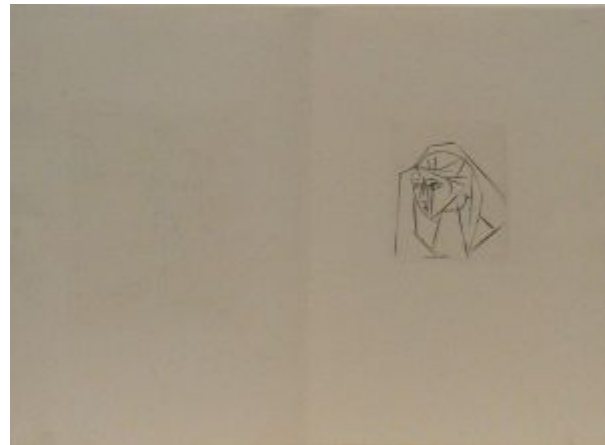


Nature morte au citron et au pichet rouge. Paris. [1954] 1955 [1960] [1964]. Aquatint in colors on wove paper, edition 300 [After *Nature morte au pichet*]. 32,4 x 40,4 cm. Christie's. #191, 1428, 11/02/04.

OPP.55:113

Tête de jeune fille (Tristan Tzara, À Haute Flamme). Cannes. 1955. Drypoint on celluloid. 7,5 x 6,2 cm. Christie's. #129, 1481, 02/08/05.

OPP.55:122; B.I:786; Ba:933; GC:72.6





Visage de femme. Vallauris. 1955. Painted & partially glazed white ceramic platter, edition 500. 32 cm. Sotheby's. #133, W05723, 07/12/05.

OPP.55:130; AR:286

Petite colombe de la paix. Paris. 1955. Lithograph in colors. 22,5 x 33,3 cm. Ketterer Kunst. 2005. Also Sotheby's. #160, PF1413, 12/18/2014.

OPP.55:133; MU.05*:n/a





Masque. Cannes. 1955~1956. Color pencil & cut-out paper. 9,5 x 29,5 cm. Private collection.

OPP.55:132; DO.07*:220

Masque. Cannes. 1955~1956. Color pencil and cut-out paper. 9 x 33 cm. Private collection.

OPP.55:147; DO.07*:219





Visage lunaire. [Vallauris]. [1955~1956]. White clay. 31 cm. Fundación Almine & Bernard Ruiz-Picasso para el Arte.

OPP.55:157; GS.03:1.123

Homme barbu. Vallauris. 1955~1956. Painted, partially glazed & incised ceramic; round plate. 41 cm. Sotheby's. #158, L15007, 06/25/15.

OPP.55:401





La colombe de la paix. Vallauris. 1955~1960.
Wax crayon on paper. 23,4 x 32,4 cm. Christie's.
#127, 14075, 10/21/16. Formerly Joakim von
Ditmar Fine Art and Deco. 2008.

OPP.55:413